

DIOCESE OF KUMBO
SOCIAL WELFARE SERVICES/CARITAS
KUMBO

OPEN NATIONAL INVITATION TO TENDER
N^o: _____

FOR

**THE CONSTRUCTION OF 8 WATER SCHEMES,
IN 8 VILLAGES IN THE DIOCESE OF KUMBO,
CAMEROON**

FUNDING: VILLAGE COMMUNITIES, MISEREOR,
DIOCESE OF LIMBURG, THROUGH THE SOCIAL
WELFARE SERVICES/CARITAS KUMBO

TENDER DOCUMENTS

CONTENTS

No.	DESCRIPTION	Page
Doc 1	TENDER NOTICE	
Doc 2	THE SPECIAL TENDER REGULATIONS	
Doc 3	THE GENERAL ADMINISTRATIVE CLAUSES (GAC)	
Doc 4	THE TECHNICAL SPECIFICATIONS	
Doc 5	BILL OF QUANTITIES AND COST ESTIMATES (BQ).	
Doc 6	MODEL FORMS.	
Doc 7	Situation Maps	
Doc 8	EXECUTION PLANS	

Document N° 1: TENDER NOTICE

TENDER NOTICE

A) SUBJECT OF THE INVITATION TO TENDER:

Within the framework of the Sixth Phase of the Village pipe-borne water supply program and accompanying Rural populations on water systems management and water Safety measures in the Diocese of Kumbo, the Social Welfare department/CARITAS Kumbo here represented by The Coordinator, CARITAS Kumbo and on behalf of His Lordship, the Bishop of Kumbo, Legal Holder of all Projects within the Diocese of Kumbo; through the Diocesan Social Welfare/ Caritas department hereby launches a National Invitation to tender for the construction of 08 Water Supply Scheme(s) in the following communities in the Diocese of Kumbo, North West Region

S/N	Project (Year 1)	Sub Division	Division
1	Kumanji Binshua Water Project	Nkambe	Donga Mantung
2	Mokov/Pastoral Center Water project	Kumbo Central	Bui
3	Ngotong Ntumbe Water project	Nkambe	Donga Mantung
4	Saah Water Project	Nkambe	Donga Mantung
	Year 2		
5	Fingong Water Supply	Nkambe	Donga Mantung
6	Ladibai Water Supply	Nkor	Bui
	Year 3		
7	Bamfem Water Supply	Kumbo Central	Bui
8	Nyawu - Djottin Water Supply	Nkor	Bui

B) PARTICIPATION:

Participation in this present invitation to tender is open to experienced and duly registered qualified contractors and NGOs of the Republic of Cameroon, who are familiar with the geographical territory of Bui and Donga-Mantung Divisions and who have been working in the area since 2015; with the necessary financial capability, technical and professional expertise in Public works and construction and with good experience in community Development.

C) FINANCING:

The said works shall be financed with Funding from MISEREOR, the Diocese of Limburg (both institutions are in Germany), and Rural communities, and through the Social Welfare/Caritas department of the Diocese of Kumbo for the realisation of the above referenced works.

D) CONSULTATION AND ACQUISITION OF FILES:

The file may be consulted during working hours at the CARITAS Secretariat, Bishop's house, Kumbo, contact; 679884778, the Social Welfare/Caritas Kumbo branch office in the Archdiocese of Bamenda located at Down Beach Hostels, Big Mankon, 653524358.

E) SUBMISSION OF BIDS:

Each bid drafted in English or French shall be submitted in four (04) copies indicating one (01) original and three (03) copies labelled as such on them and shall be submitted at any of the above mentioned offices on or before **Thursday, April 11, 2024 at 11:00 am prompt. Bids deposited after 11:00 am shall not be accepted.**

The outer envelope shall bear the following inscriptions:

OPEN NATIONAL INVITATION TO TENDER

N^o: _____

FOR

THE CONSTRUCTION OF WATER SUPPLY SCHEMES, IN THE DIOCESE OF KUMBO

(TO BE OPENED ONLY DURING THE BIDS OPENING SESSION).

F) ADMINISTRATIVE DOCUMENTS:

All administrative documents attached to bids should either be originals or certified true copies by competent services in charge and not more than three (03) months old.

G) CONFORMITY CRITERIA:

Tender conformity shall be evaluated as per the following:

A) Eliminary Criteria.

- ✓ Absence or non-compliance of one of the administrative file documents.
- ✓ Forged documents in the administrative/technical/financial files.
- ✓ Certified true copies of documents more than three (03) months old.
- ✓ Bidders not having experience in Community Development.
- ✓ Bidders who are not familiar with the terrain and or who (because of the ongoing war) have not been working in the area since 2015

B) Evaluation Criteria.

The preliminary evaluation shall be binary and based on the following essential criteria:

- ✓ Compliance with technical specifications of the tender file.
- ✓ Bidder's experience with similar works.
- ✓ Methodological approach and relevance of proposed solutions.
- ✓ Qualification, experience and skills of key personnel relevant to the works, Work planning and schedule.
- ✓ Equipment and tools vital for the execution of the works.
- ✓ Field presence

Any offer that shall not respect two third (2/3) i.e. (70%) of the above criteria shall simply be eliminated.

H) OPENING OF BIDS:

The bids shall be opened *in a single* phase and shall take place at the CARITAS Kumbo Conference Hall, Bishop's House Kumbo **on 12 April 2024 at 2:00 pm prompt** local time in the presence of bidders or their representatives who have full knowledge about the bids submitted.

I) DURATION FOR EXECUTION OF WORKS:

The maximum duration for the execution of works for each execution year fixed at six (06) calendar months and as from the date of notification of Service Order to start works.

J) ADDENDUM:

The Contracting Authority (Coordinator, CARITAS Kumbo) and in consultation with the donor community and legal holder; reserves the right to carry out any necessary modifications to this invitation to tender.

K) COMPLEMENTARY INFORMATION:

For any other information, bidders are advised to contact the Coordinator or the Administrative Secretary Social Welfare/CARITAS Kumbo. The office is situated on the left as you drive in to the Hill of the Immaculate Conception; Bishop's House Kumbo, during working hours (contacts, Tel :679884778/675376381)

**THE COORDINATOR,
Social Welfare/CARITAS KUMBO
BISHOP'S HOUSE KUMBO
PO BOX 115**

CC ;

- Donga Mantung Community Radio
- Radio Evangelium
- Public Notice Boards
- National Laucheon Date Program CRTV

Document N^o: 2:
THE SPECIAL TENDER REGULATIONS

II THE SPECIAL TENDER REGULATIONS

A) INTRODUCTION

ARTICLE 1: SOURCE OF FUNDING

- 1.1 The project shall be financed through the Social Welfare/Caritas Kumbo with funds from, MISEREOR, the Diocese of Limburg (both in Germany), and the beneficiary local communities in the Diocese of Kumbo. The program is in its Sixth Phase and is for the provision of Village pipe-borne water supply and accompanying Rural populations on water systems management and water safety measures in the Diocese of Kumbo.
- 1.2 This present open national invitation to tender has as subject.
"THE CONSTRUCTION OF 08 WATER SCHEMES IN THE DIOCESE OF KUMBO"
- 1.2 The Coordinator, CARITAS Kumbo and representative of the Legal Holder as program Manager is the Contracting Authority.
- 1.3 All documents submitted by the bidder in any capacity, following this open national invitation to tender, must be established exclusively:
 - In English or French,
 - Using the metric system for quantities,
 - Expressing all costs prices in Francs CFA currency,
- 1.4 Bidders shall remain bound by their bids for a period of ninety (90) days from date of opening of the bids

ARTICLE 2: OBLIGATIONS AND CONDITIONS TO TENDER

- 2.1 Any bid that does not respect any of the conditions for tendering shall not be received.
- 2.2 The bidders shall submit four (04) copies with one (01) original and three (03) copies (indicated on them as such) of his/her bids drafted in English or French at the CARITAS Kumbo Secretariat, Bishop's house, Kumbo, or the Social Welfare/Caritas Kumbo branch office in the Archdiocese of Bamenda located at Down Beach Hostels, Big Mankon, on or before the 11/04/2024 at 11:00am prompt. No bid shall be received after this time and date.
- 2.3 After submission no bids shall be withdrawn, modified or corrected for any reason.
This condition shall apply before, during and after the submission date.

ARTICLE 3: THE BIDDING DOCUMENTS

- 3.1 The documents that make up this tender are as follows:
 - Document N^o: 1: Invitation to Tender.
 - Document N^o: 2: The Special Tender Regulation
 - Document N^o: 3: The Special Administrative Conditions (SAC)
 - Document N^o: 4: Technical Specifications (TS)
 - Document N^o: 5: Form for Bill of Quantities and Costs Estimates (BQCE)
 - Document N^o: 6: Model Forms
 - Declaration of the intention to Tender Form
 - Tender Form
 - Bank Guarantee Forms (Guarantee retentions)

ARTICLE 4: AMENDMENT OF BIDDING DOCUMENTS

- 4.1 At any time prior to the deadline for submission of bids, The Social Welfare/CARITAS Kumbo may modify the bidding documents for any reasons, whether at its own initiative or in response to a clarification requested by a prospective bidder.
- 4.2 All prospective bidders that have received the bidding documents will be notified of all amendments in writing (email), or be contacted by telephone to do so and all such modifications will be considered as an integral part of their bidding documents.
- 4.3 In order to allow prospective bidders reasonable time in which to take the amendment into account in preparing their bids, The Social Welfare/CARITAS Kumbo at its discretion, may extend the deadline for the submission of bids if there were any such amendments.

ARTICLE 5: PRESENTATION OF BIDS

5.1 Signature of bids – Power of Attorney

5.1.1 All the signatures and initials needed for the tender and indicated in this article must be those of the bidder himself or his/her representative duly mandated.

5.1.2 If the bidder is a group or enterprises, each group member or representative must sign the bidding documents such that the result shall be a joint offer.

The group shall choose a common representative who shall receive Service Orders and carry out all transactions in the name of the group.

5.2 Presentation of bids

The bid shall be presented in four (04) copies (one (01) original and three (03) copies) marked as such and put inside a sealed envelope comprising the following:

ADMINISTRATIVE DOCUMENTS

The bid submitted by the bidder shall comprise the following:

- A1. The declaration to tender (in the format enclosed in the annex of these regulations) signed and stamped by the bidder or group representative
- A2 A registration certificate of the NGO or Certificate of incorporation for Business entities
- A3 An attestation of a bank account in the name of the enterprise.
- A4 A certified copy of current Business Licence. (for Business entities)
- A5 A certified copy of Tax payer's card (with regime same as in Business Licence). (for Business entities)
- A6 An Attestation from the NSIF (for Business entities)
- A7 A proof of nationality of bidder (certified true copy of N.I.D card of General Manager or Coordinator).
- A8 Certificate of non-exclusion from the Public Contracts Regulatory Board (ARMP). (for Business entities)
- A9 Attestation of site visit and recognition of site, signed by the concerned. (Village head or the Water management Committee chairperson).

N.B: Absence any of the documents shall result to outright rejection
All bids not in conformity with the models shall be simply rejected.

N.B: All documents shall be originals as requested or certified true copies legalised by competent services or that which issued them and must not be more than three (03) months old.

The documents shall be arranged in the order listed above and separated from each other by colour separators

Any document with double certification shall not be accepted.

TECHNICAL OFFER

It shall contain the documents cited and placed in the following order:

No	DOCUMENT	OPERATION REQUESTED	AUTHENTICATION
B1	Equipment list	It shall show clearly the means at the disposal of the enterprise to carry out the job (list of equipment and tools)	None.
B2	Personnel list	It shall contain: ☞ Works Supervisor: At least a Civil Engineering technician with at least 5 years' experience in the field of construction ☞ Foreman: a holder of at least CAP or Equivalent certificate in building construction with at least 5 years' experience in the domain of Construction.	Attach for each person a CV signed and dated, as well as certified copies of current certificates.
B3	Organisation of works	In conformity with article 7 below, it shall show clearly the organisation of the enterprise (methodology of execution, work schedule, site installation, supply of materials, etc)	Date, signature and stamp of bidder at the end of document.
B4	Sub-contracting	The Social Welfare/CARITAS Kumbo, doesn't accept and allow for sub-contracting.	
B5	Attestation of site visit	Attestation of visit to the site where the works are to be carried out.	Dated and signed by the concerned
B6	References of the enterprise.	List of similar jobs executed in the last three (03) years by the enterprise and or other civil engineering works realised.	None
B7	Technical specifications	Provided in tender file.	Initialed on every page, Signed and stamped on the last page

FINANCIAL OFFER

No	DOCUMENT	OPERATION REQUESTED	AUTHENTICATION
C1	The tender	Format to be completed and tender amount inserted.	Signature, date and stamp of bidder.
C2	Bill of Quantities and Cost Estimates	Format to be completed.	Initials on each page, signature on last page, all pages stamped.

All these documents are to be arranged in the above order and separated with colour separators.

5.3 SUBMISSION OF OFFERS AND OPENING OF BIDS

Envelope to be sealed and marked "ADMINISTRATIVE DOCUMENTS, TECHNICAL OFFER and FINANCIAL OFFER" as the case may be.

The envelope shall be sealed and shall carry the following inscriptions:

OPEN NATIONAL INVITATION TO TENDER

N^o: _____

FOR

THE CONSTRUCTION OF WATER SUPPLY SCHEMES, IN THE DIOCESE OF KUMBO

(TO BE OPENED ONLY DURING THE BIDS OPENING SESSION).

All bids shall be deposited at the The Social Welfare/CARITAS Kumbo office or the Social Welfare/Caritas Kumbo branch office in the Archdiocese of Bamenda located at Down Beach Hostels, Big Mankon **on or before 11/04/2024 at 11:00 am prompt.**

In the case where the envelope shall not be sealed or without the inscription on it, The Social Welfare/CARITAS KUMBO shall decline all responsibility for misdirection or premature opening. Any bid opened prematurely shall be rejected and returned to the bidder.

ARTICLE 6: TECHNICAL PROPOSALS

Proposals for different variants can be accepted from the bidder but the bidder has the obligation of costing the variant in the tender file.

ARTICLE 7: TENDER

Each bidder shall tender following the conditions laid down in this tender file.

ARTICLE 8: CURRENCY

The unit prices shall be calculated in Francs CFA, and furnished in figures and words without taxes. The currency that shall be used for payment shall be the FCFA.

ARTICLE 9: PAYMENT MODALITIES

The contractor shall be paid upon presentation of a Detailed Request of Funds for a particular task, visa to Pay by the Coordinator, Social Welfare/CARITAS Kumbo and submitted through the office accountant to the Kumbo Diocesan Finance Secretary. The contractor shall only be paid through the contractor's organizational bank account.

ARTICLE 10: VERIFICATION OF BIDS

10.1 The Social Welfare/CARITAS Kumbo has a period of one week to examine the bids and make its decision.

10.2. At the request of the selection committee, the bidder shall furnish in writing, within seven (07) calendar days, any information necessary for the examination of his bid or concerning errors and omissions noted.

10.3. The Selection Committee reserve the right to summon the bidder at his expenditure for complementary explanations. Any errors discovered by the Selection Committee shall be rectified as follows:

10.3.1. Where there exist a difference between the amount in figures and the amount in letters, the verified and calculated amount in figures shall be taken as correct;

10.3.2. Where there exist a difference between a unit price and the amount obtained by the product of unit price and the quantity, the unit price shall be taken, except the tender board estimates that it is an error of decimal point, in which case the amount is taken and the unit price corrected.

ARTICLE 11: VALIDITY OF BIDS

The bidder shall be bound by his bid for a period of ninety (90) days from the day of submission of bids.

If at the end of this period the Jobbing Order is not notified to the bidder, he can withdraw his bid or accept the extension of duration on the written request of the administration.

ARTICLE 12: OPENING/EVALUATION OF BIDS AND CHOICE OF CONTRACTOR:

The opening of bids shall take place on the date and place prescribed in the tender file. Envelopes received from prospective bidders shall be opened at once and evaluated in two stages.

i. OPENING OF ENVELOPE.

(Administrative documents) shall be opened in the presence of the bidders and the conformity of the documents verified. The administrative documents must be complete, valid and authentic. Only bids with documents that meet these requirements shall have their other conditions evaluated.

(Technical Offer) shall be opened in the presence of the bidders to determine whether the file is complete with the authenticity of documents checked and whether the documents are legalised by the competent services concerned and placed in the recommended order.

(Financial Offer) shall be carried out only for bids that have sailed through the first two steps.

Bids amounts shall be read out in public as inscribed in the financial offer of the bidder.

12.1: Evaluation of Financial Offer:

Careful study shall be carried out on the details of prices, unit prices, the bill of quantities and cost estimates presented to make sure the bidder did study the prices and has not made an arithmetic error to arrive at his final contract amount. The prices on the PES shall have priority over those of the BQCE and PE. They shall serve as the bases of calculation of the bidding amount.

The eventual calculation errors shall be corrected after Analysis and the amount altered if necessary without any complaints from the bidder.

Any neglect noticed at the study of prices and volumes of works shall lead to the disqualification of the bid.

12.2 CHOICE OF CONTRACTOR (CRITERIA OF AWARDED CONTRACT):

The contract shall be awarded to the meritorious and lowest best bidder. Careful and comparative study must be carried out on the details of prices, unit prices, the bill of quantities and cost estimates presented to make sure the bidder did study the prices and has not made an arithmetic error to arrive at his final contract amount.

ARTICLE 13: PROCEDURE OF AWARD OF CONTRACT

13.1 The results from this tender shall be prepared, awarded and executed according to the Social Welfare/CARITAS KUMBO and donor procedures.

13.2 The winner shall be notified through his official address. He shall in five (05) days fulfil the formalities related to the awards, especially to submit two (2) copies (one original and one photocopy) of the proposed contract that he/she has completed and signed, to the office of the Contracting Authority for final signature.

13.3 In the case where the enterprise does not fulfil these conditions, his choice shall simply be annulled without further notice and the next contender shall be called in for replacement.

Once the Contracting Authority has signed the contract, the contractor shall be notified through the Administrative Secretary with immediate effect. He has three (03) days to contact the Authorising Officer through the Administrative Secretary for the beginning of execution of works following notification of the Service Order to start work by the project Engineer. Failure to respect the deadline shall call for withdrawal and eventual cancellation of contract.

THE COORDINATOR
Social Welfare/CARITAS KUMBO

Document N^o. 3: **GENERAL ADMINISTRATIVE
CLAUSES
(Draft contract)**

1- PARTIES TO THE CONTRACT.

CONTRACT OF AGREEMENT BETWEEN THE SOCIAL WELFARE/CARITAS DEPARTMENT OF THE DIOCESE OF KUMBO AND FOR THE EXECUTION OF PROJECT No 121-014-1055 ZG BEARING ON THE PROVISION OF PIPE BORNE WATER TO 8 VILLAGE COMMUNITIES IN THE DIOCESE OF KUMBO

The Social Welfare/Caritas department of the Diocese of Kumbo and the enter into an Execution Agreement dated March 2024 and based on award of contract after competitive bidding and bearing on the provision of portable water to some 08 village communities in the Diocese of Kumbo; now based on the terms specified in a letter of Approval dated 05th January 2024 originating from MISEREOR the grant awarding agency. The main goal of the project is to contribute to reducing the incidence of water-borne diseases and improving the general health situation of the inhabitants in rural communities of the Diocese of Kumbo.

1. SUBJECT OF THE CONTRACT

- The purpose of this contract is to clearly specify requirements and responsibilities of each party in specific regards to the study, and
- **Construction of 08 new gravity water supply systems** with an easy distribution network and public stand pipes in 08 villages of the Diocese of Kumbo.

2. GENERAL PROVISIONS

- The executing organization shall provide services according to the scope of work specified in the document and now based on the approved budget by MISEREOR.
- The executing organization has evaluated and costed the scope of work and ensured that the services as defined in the scope of Work can be provided. In addition, the prices quoted by the contractor remain binding on him throughout the contract period.
- The Contractor will be subject to the Contract documents and the scope of work, will carry out and provide the services as outlined in Article 3.1 in a proper and conscientious manner, and to a good standard.
- It is assumed that the contractor, prior to signing the original contract has carried out adequate inspection of the situation on site and has clarified any queries with the Social Welfare/Caritas department of the Diocese of Kumbo to accept full responsibility for the services included in this Contract.
- Neither the contractor, nor the Social Welfare/Caritas department of the Diocese of Kumbo shall assign this Contract to other parties without the written consent of the other party. The contractor shall remain wholly responsible for carrying out and completing the Contract.

3. COMMENCEMENT AND COMPLETION DATES.

- The term of the Agreement which shall begin in March 2024 shall expire in February 2028. The term can be further extended only by agreement of

both the Social Welfare/Caritas department of the Diocese of Kumbo and the Contractor. For the sake of clarity and the avoidance of doubt, the parties hereby agree and acknowledge that the term of the Agreement is based on the original contract headed "Grant Approval Notice" from MISEREOR.

4. PRICES OF CONTRACT

- The Social Welfare/Caritas department of the Diocese of Kumbo shall through the Finance department of the Diocese of Kumbo pay the Contractor the fixed price in CFA stipulated at each stage of the construction phase of the execution of project 121-014-1055 ZG inclusive of any tax liabilities and discounts, hereinafter called Price of Contract.

5. TERMS OF PAYMENT

- The price of Contract as specified in article 4.1 will be paid as follows
- On request for funds by the contractor specifying dates, tasks and villages to be covered and after due justification of previous disbursement
- Approval for payment duly signed by the coordinator of the Social Welfare/Caritas department being project manager
- Validation of request by issuance of check in the amount requested by the competent signatories of the account being His Lordship the Bishop of Kumbo and the Diocesan Finance Secretary
- All payments will be made via check issuance or bank transfer to the Contractor's organizational bank account.

6. RIGHTS AND OBLIGATIONS OF THE SOCIAL WELFARE/CARITAS DEPARTMENT

- Pay in a timely manner for the services provided under this contract according to the provisions under article 5 of this contract.
- The Social Welfare/Caritas department has the right during any time of the Contract's execution to be informed on and check the quality and the stage of the Contractor's obligations without disturbing the working process of the Contractor.

7. RIGHTS AND OBLIGATIONS OF THE CONTRACTOR

- Accomplish the tasks in a timely and efficient manner and as required by the Social Welfare/Caritas department of the Diocese of Kumbo
- At any stage of this contract, provide any information required by the Social Welfare/Caritas department and allow access to same to check the quality and stage of the Contractor's obligations.
- Keep strictly confidential and not discuss to any third party, except the concerned village communities and with the authorisation of the social welfare/Caritas department any matters related to the provisions of the Contractor's obligations under this contract.
- The obligations and the performance of the contractor under this agreement shall not, except in case of "Force Majeur", be affected either by changes in climatic conditions or by market conditions or any other event whatsoever and the contractor hereby agrees that all considerations have been taken into account before signing this contract".

8. PENALTIES AND DEDUCTIONS

- If the Contractor fails to complete the work by the date of Completions of February 2028, the Social Welfare/Caritas department shall issue a Certificate of Non-completion, subject to which the Contractor shall pay or allow the Social Welfare/Caritas department to deduct liquidated damages at the amount of 5/1000 of total price of contract per day of delay.
- If the Contract is terminated due to the Contractor's faults, the Social Welfare/Caritas department has the right to impose the adequate penalty and/deductions on the Contractor. In that case, the penalty and/or deduction will be set according to the laws in Cameroon.

9. CONTRACT MODIFICATIONS

- This Contract can be modified only with mutual consent where an amendment to the Contract will be signed, which will become an inseparable part of the Contract. The amendments will come into force from their date of signing.

10. STATUTORY OBLIGATIONS

- The parties shall comply with any statutory instruments, rules or orders, or any local government regulations applicable to the contract.
- If any of the parties notices a divergence between the statutory laws and the contract, it should immediately notify in writing the other party about that divergence with a proposal for respective contract modifications.

11. TERMINATION

- This contract will be terminated in the following cases:
 - On specified date of completion of February 2028
 - By mutual agreement of both parties.
 - Either party, for its convenience can terminate this contract in whole or in part at any time prior to the date of completion of February 2028 by giving a written notice to the other within 5 working days in advance.
 - The contractor suspends the carrying out of the obligations without a reasonable cause;
 - The contractor fails to proceed regularly and diligently with provision of obligations as per contract;
- Evidence shows that the contractor is employing child labor to accomplish the contract.
- If evidence shows that the Contractor or any of his staff has gone against the Code of Conduct of the PSEA policy which they shall commit to respect within the period of validity of this contract

12. COPY RIGHTS

- The Social Welfare/Caritas department of the Diocese of Kumbo and the concerned village communities is the sole owner of the services rendered. Any copy, duplicate, or imitation requires the written pre-approval of the Social Welfare/Caritas department.

13. SETTLEMENT OF DISPUTES AND ARBITRATION

- Each party to this Contract shall notify the other in writing in case of any disagreement or differences.

- All disputes or disagreement that may arise between the Social Welfare/Caritas department and the Contractor during the execution of this Contract shall be resolved through negotiations.
- In case both parties cannot reach an agreement by means of negotiation, they have recourse to Cameroon courts or to a mutually agreed mediator.
- The applicable law for this Contract is the Cameroon law.

14. RISK

The Social Welfare/Caritas department of the Diocese of Kumbo is not liable for any injury affecting third parties during the implementation of this contract
 This amendment replaces the terms and agreement of the original contract
 IN WITNESS WHEREOF, the parties hereto have executed this Amendment as a sealed instrument, as of the date of signature below.

The Social Welfare/Caritas department of the Diocese of Kumbo

By: _____
 His Lordship, Bishop George NKUO (Legal Holder)
 Bishop of Kumbo

The Contractor

By _____

Document N°. 4: TECHNICAL SPECIFICATIONS

TECHNICAL CONDITIONS FOR EXECUTION

1) STRUCTURES AND EXECUTION PLANS:

The following objective structures shall be executed per project in this phase of the program;

PROJECT TITLE	<i>Kumanji Binshua Village Water Project</i>		
Sub Division	<i>Nkambe</i>		
OBJECTIVE STRUCTURES			
S/N	STRUCTURE	DESCRIPTION	QUANTITY
1	Construction of Catchment	Spring	1
2	Construction of storage tank	Intze Tank 15m ³ Suction Tank 15m ³	1
3	Construction of Standtaps		4
4	Installation of Solar pump with all its subjections		1
5	Construction of Control Valve Chambers		2
6	Piping Network	Dia. 63x3.6mm x 6m NP 10	0
		Dia. 050x3.2mm x 6m NP 10	0
		Dia. 040x3.2mm x 6m NP 10	2433
		Dia. 032x2.6mm x 6m NP 10	313
		Dia. 025x2.0mm x 6m NP 10	400
7	Tool Box		1

PROJECT TITLE	Mokov/Pastoral Center Village Water Project		
Sub Division	Kumbo		
OBJECTIVE STRUCTURES			
S/N	STRUCTURE	DESCRIPTION	QUANTITY
1	Construction of Catchment	Spring	3
2	Construction of storage tank	Intze Tank 15m ³	1
		Suction Tank 15m ³	1
3	Construction of Standtaps		10
4	Stream Crossings		5
5	Construction of Low/High point chambers		5
6	Construction of Control Valve Chambers		2
7	Piping Network	Dia. 63x3.6mm x 6m NP 10	0
		Dia. 050x3.2mm x 6m NP 10	8,614
		Dia. 040x3.2mm x 6m NP 10	3,381
		Dia. 032x2.6mm x 6m NP 10	1,535
		Dia. 025x2.0mm x 6m NP 10	500
8	Tool Box		1

PROJECT TITLE	Ngotong Ntumbe Village Water Project		
Sub Division	Nkambe		
OBJECTIVE STRUCTURES			
S/N	STRUCTURE	DESCRIPTION	QUANTITY
1	Construction of Catchment	Spring	2
2	Construction of storage tank	Ntumbe Up 5m ³	1
		Ntumbe Down 30m ³	1
3	Construction of Standtaps		11
4	Stream Crossings		3
5	Construction of Low/High point chambers		3
6	Construction of Control Valve Chambers		3
7	Piping Network	Dia. 63x3.6mm x 6m NP 10	0
		Dia. 050x3.2mm x 6m NP 10	1,948
		Dia. 040x3.2mm x 6m NP 10	2,897
		Dia. 032x2.6mm x 6m NP 10	613
		Dia. 025x2.0mm x 6m NP 10	800
8	Tool Box		1

PROJECT TITLE	Saah Village Water Project		
Sub Division	Nkambe		
OBJECTIVE STRUCTURES			
S/N	STRUCTURE	DESCRIPTION	QUANTITY
1	Construction of Catchment	Spring	2
2	Construction of storage tank	Distribution tank at CBC hill 25m ³	1
		3Suction tank at Mada 25m ³	1
		T4ank below the market 10m ³	1
3	Installation of complete solar pump with all its subjections		1
4	Construction of Standtaps		14
5	Stream Crossings		2
6	Construction of Low/High point chambers		2
7	Construction of Control Valve Chambers		3
8	Piping Network	Dia. 63x3.6mm x 6m NP 10	0
		Dia. 050x3.2mm x 6m NP 10	1,598
		Dia. 040x3.2mm x 6m NP 10	5,948
		Dia. 032x2.6mm x 6m NP 10	2,211
		Dia. 025x2.0mm x 6m NP 10	1,000
9	Tool Box		1

PROJECT TITLE	Fingong Village Water Project		
Sub Division	Nkambe		
OBJECTIVE STRUCTURES			
S/N	STRUCTURE	DESCRIPTION	QUANTITY
1	Construction of Catchment	Spring	1
2	Construction of storage tank	15m ³	1
3	Construction of Standtaps		8
4	Stream Crossings		3
5	Construction of Low/High point chambers		4
6	Construction of Control Valve Chambers		2
7	Piping Network	Dia. 63x3.6mm x 6m NP 10	0
		Dia. 050x3.2mm x 6m NP 10	3,336
		Dia. 040x3.2mm x 6m NP 10	200
		Dia. 032x2.6mm x 6m NP 10	1,768
		Dia. 025x2.0mm x 6m NP 10	500
8	Tool Box		1

PROJECT TITLE	Ladibai Village Water Project		
Sub Division	Noni		
OBJECTIVE STRUCTURES			
S/N	STRUCTURE	DESCRIPTION	QUANTITY
1	Construction of Catchment	Spring at Ensung	2
2	Construction of storage tank		1
		At Ensung 30m ³	1
3	Construction of Standtaps		12
4	Stream Crossings		7
5	Construction of Low/High point chambers		6
6	Construction of Control Valve Chambers		2
7	Piping Network	Dia. 63x3.6mm x 6m NP 10	0
		Dia. 050x3.2mm x 6m NP 10	3,881
		Dia. 040x3.2mm x 6m NP 10	4,611
		Dia. 032x2.6mm x 6m NP 10	400
		Dia. 025x2.0mm x 6m NP 10	700
8	Tool Box		1

PROJECT TITLE	Bamfem Village Water Project		
Sub Division	Kumbo		
OBJECTIVE STRUCTURES			
S/N	STRUCTURE	DESCRIPTION	QUANTITY
1	Construction of Catchment	Spring	1
2	Construction of storage tank	Distribution Tank 15m ³	1
		Suction Tank 15m ³	1
3	Installation of Solar Pump with all its subjections		1
4	Construction of Standtaps		5
5	Stream Crossings		3
6	Construction of Control Valve Chambers		1
7	Piping Network	Dia. 63x3.6mm x 6m NP 10	0
		Dia. 050x3.2mm x 6m NP 10	1,568
		Dia. 040x3.2mm x 6m NP 10	212
		Dia. 032x2.6mm x 6m NP 10	408.9
		Dia. 025x2.0mm x 6m NP 10	400
8	Tool Box		1

PROJECT TITLE	<i>Nyawu - Djottin Village Water Project (First Phase)</i>		
Sub Division	<i>Noni</i>		
OBJECTIVE STRUCTURES			
S/N	STRUCTURE	DESCRIPTION	QUANTITY
1	Construction of Catchment	Spring	1
2	Construction of storage tank	60m ³	1
3	Construction of Standtaps		0
4	Stream Crossings		2
5	Construction of Low/High point chambers		2
6	Construction of Control Valve Chambers		0
7	Piping Network	Dia. 63x3.6mm x 6m NP 10	2,414
		Dia. 050x3.2mm x 6m NP 10	0
		Dia. 040x3.2mm x 6m NP 10	0
		Dia. 032x2.6mm x 6m NP 10	0
		Dia. 025x2.0mm x 6m NP 10	0
8	Tool Box		1

1) PRELIMINARY WORKS:

The contractor shall obtain all the documents necessary for the realisation of this contract from the competent services concerned. He shall also make sure that he adequately sensitize and mobilize the communities concerned, in partnership with The Social Welfare/CARITAS program officers, on community participation including provision of local materials and local unskilled labour, in the realization of the projects.

2) SETTING OUT OF STRUCTURES

The contractor shall be responsible for the setting out of all pertinent lines, works, grades, reference points and levels that may be required for the proper and accurate positioning of all the structures on the work site. The works so set out shall be received by the Supervising Engineer before construction work actually begins

3) PROTECTION OF STRUCTURES AND MATERIALS:

The contractor shall be responsible for the protection of the structures before final reception. He shall be equally responsible for all tools and materials present at the work site.

4) PRECAUTION AGAINST ACCIDENTS:

The contractor shall take all preventive measures against accidents. The owner of the project reserves the right to intervene in case of any emergency without necessary interfering with the responsibilities of the contractor.

5) VERIFICATION OF DIMENSIONS:

The contractor shall verify all dimensions on the plans. For execution no dimension shall be measured with a scale rule from the plans. The contractor shall check on site the possibility of translating the dimensions on plans to the structure before work begins. He shall refer to the Control Engineer in case of any doubt. He shall not on his own modify anything on the structure and shall inform the Control Engineer of any changes that he considers necessary. The owner of the project shall have the right to the final choice in case of any modification.

6) ERRORS AND OMISSIONS IN THE DOCUMENTS:

The descriptive notice completes or confirms the indications on the execution plans. In the case of contradictions between the plans and the descriptive notice, the project team shall be contacted for examination, elaboration and conclusion.

1. MODE OF EXECUTION OF WORKS

a) SITE PREPARATION:

- i) **SPRING Excavation:** All springs shall be excavated to a bearing soil starter by the community. This shall be valued as part of local kind contribution. Technical excavation shall be done by skilled labour. It shall be insured that all excavated springs should have enough cover (+2m), otherwise, the channel shall be lengthened except that the spring is discovered to be an althesan spring.
- ii) **TANKS and other structures:** excavation to the bearing stratum at the storage tank and other structural site should be ensured.
- iii) **PIPE LINE EXCAVATIONS.** The pipelines shall be excavated to a minimum depth of 60cm, by the community with the supervision and directions of the contractor and project supervisor ensuring that the base of the trenches are free from stones and other materials which can damage the pipes under pressure.

b) STONE MASONRY: - Stone masonry shall be aesthetic and in accordance with structure type and civil engineering rules. Binding mortar shall be dosed 300kg/m³, with sand of sand equivalent not less than 85%. A suitable water repellent adhesive shall be added to the mortar mix in sufficient quantities as recommended by the manufacturer.

c) POINTING AND PLASTERING

The walls of all stone masonry walls not to be in contact with stored water shall be pointed with a mortar mix of 1:1. Recess or Flush pointing should be adopted.

d) PLASTERING

Internal rendering of all walls to be in contact with water shall include;

- Application of three coats of spattered dash cement mortar of 1: 1 each applied after six hours before the other,
- Equalizing the wall surface with a rendering coat dosed at 1:2 after six hour of application of the last spattered dashing coat,
- Application of three coats of spattered dash cement mortar of 1: 1 each applied after six hours before the other, on the rendering coat
- Applying a final plaster with an average thickness of 1cm, and with a 1:2 mortar mix after six hour of application of the last spattered dash coat.
- Application of the finishing cement paste smooth surface immediately after the application of the final plastering, to allow for proper bonding.

e) PLUMBING WORKS

Plumbing works include:

- i) Laying of pipes in the trenches
- ii) Construction and installation of chambers for air valves, washouts and control valves
- iii) Installation of branch lines right to the standpipes.

PIPE SPECIFICATIONS

Pipes should meet the physical characteristics presented in table1 below:

Table 1: Physical Characteristics of pipes

Internal Ø &external Ø (mm)	Thickness (mm)			Socket length (mm)	Nominal service pressure (bars)	Length of pipe (m)
	Minimum	Nominal	Maximum			
21x25	1.9	2.0	2.3	28	10	6
26.8x32	2.4	2.6	2.9	32	10	6
35x40	2.3	2.5	2.8	40	6	6
33.6x40	3.0	3.2	3.5	40	10	6
43.6x50	3.0	3.2	3.5	50	6	6
42x50	3.7	4.0	4.3	50	10	6
56.6x63	3.0	3.2	3.5	63	6	6
53x63	4.7	5.0	5.4	63	10	6
68.6x75	3.0	3.2	3.5	75	6	6
66.6x75	3.8	4.2	4.5	75	10	6
63.2x75	5.5	5.9	6.3	75	10	6
80.6x90	4.3	4.7	5.0	90	6	6

TOLERANCES

OVALIZATION: ± 1mm

Length of pipe: ± 1% => ±6cm

Socket length: ± 0.6mm

FITTINGS SPECIFICATIONS

The fittings required for these works, are presented in Table IV below. Contractors are required to strictly respect these specifications.

All fittings not conforming to those specified in Table IV shall be rejected

SPECIFICATIONS FOR FITTINGS

Description of Goods
ADAPTOR UNION 25- $\frac{3}{4}$ "
ADAPTOR UNION 32-1"
ADAPTOR UNION 40-1 $\frac{1}{4}$ "
ADAPTOR UNION 50-1 - $\frac{1}{2}$ "
ADAPTOR UNION 63-2"
ADAPTOR UNION 75- 2 $\frac{1}{2}$ "
AIR VALVES
BALL VALVE 1 $\frac{1}{2}$ "
BALL VALVE 2"
DEC VALVE 0 $\frac{3}{4}$ "
DEC VALVE 1 $\frac{1}{4}$ "
DEC VALVE 1 $\frac{1}{2}$ "
DEC VALVE 2"
DEC VALVE 2 $\frac{1}{2}$ "
ELBOW 0 $\frac{3}{4}$ "
ELBOW 1 $\frac{1}{4}$ "
ELBOW 1 $\frac{1}{2}$ "
ELBOW 2"
ELBOW 2 $\frac{1}{2}$ "
FLOAT VALVE 63
G.I PIPE 0 $\frac{3}{4}$ "
G.I PIPE 1"
G.I PIPE 1 $\frac{1}{4}$ "
G.I PIPE 1 $\frac{1}{2}$ "
G.I PIPE 2"
G.I PIPE 2 $\frac{1}{2}$ "
G.I SOCKET 0 $\frac{3}{4}$ "
G.I SOCKET 1 $\frac{1}{4}$ "
G.I SOCKET 1 $\frac{1}{2}$ "
G.I SOCKET 2"
G.I TEE 1"
G.I TEE 1 $\frac{1}{4}$ "
G.I TEE 1 $\frac{1}{2}$ "
G.I TEE 2"
G.I TEE 2 $\frac{1}{2}$
NIPPLE 0 $\frac{3}{4}$ "
NIPPLE 1"
NIPPLE 1 $\frac{1}{4}$ "
NIPPLE 1 $\frac{1}{2}$ "

Description of Goods
NIPPLE 2"
NIPPLE 2 $\frac{1}{2}$ "
PVC ELBOW 63
PVC RED SOCKET 40-32
PVC RED SOCKET 50-40
PVC RED SOCKET 63-50
PVC RED SOCKET 75-50
PVC RED SOCKET 75-63
PVC TEE 32
PVC TEE 40
PVC TEE 50
PVC TEE 63
PVC TEE 75
PVC VALVE 32
PVC VALVE 40
PVC VALVE 50
PVC VALVE 63
PVC VALVE 75
REDUCER G.I.1"- $\frac{3}{4}$ "
PVC RED SOCKET 75-63
SADLE PIECE 32-1"
SADLE PIECE 40-1
SADLE PIECE 50
SADLE PIECE 50-1"
SADLE PIECE 63
SADLE PIECE 63-1"
SADLE PIECE 75-1"
TAP 0 $\frac{3}{4}$ "
UNION 0 $\frac{3}{4}$ "
UNION 1"
UNION 1 $\frac{1}{4}$ "
UNION 1 $\frac{1}{2}$ "
UNION 2 "
UNION 2 $\frac{1}{2}$ "
NON RETURN VALVE 2"
GEBAJOINT
GLUE 1 kg
HERM (ROLL)
SAND PAPER (ml)

f) CONCRETING:

- **Ordinary concrete:** Over site concrete dosed at 150Kg/m³ shall be placed 0.8cm thick on all finished excavations to equalize their irregularities.
- **Reinforced concrete:** All reinforced concrete works in the structures shall be dosed at least PC 350kh/m³ with steel of Fe-E-400
- ❖ **Sand:** Will be free from oxide, organic material of animals or plant origin. Sieving shall vary from 0.08 – 2.5mm for mortar and other resisting surfaces like concrete structure shall vary from 0.16 – 5mm. It shall be river sand with a sand equivalent of not less than 85%.
- ❖ **Course Aggregates:** shall consist of natural and homogeneous materials or crushed stones. Tiny layer of grave (dust) shall be removed by washing.
- ❖ **Water:** To be used for the mixture of mortar, concrete and washing of aggregates. Shall be clean and free from impurities, chemicals and salts.
- ❖ **Cement:** To be used for cement mortar, all concrete mixtures shall satisfy the general conditions laid down by regulations in force. It will be type CEM II 42.5R Portland cement or similar and shall not show any trace of uneven mixture and should be free from lumps
- ❖ **Rods:** shall be mild steel reinforcement. The steel shall be perfectly clean without any trace of rust, non-adhesive to paint or grease.

Document N° 5: **BILL OF QUANTITIES AND COSTS ESTIMATES**

BOQ FOR THE CONSTRUCTION OF KUMANJI - BINSHUA WATER SUPPLY							
LOT	DESIGNATION OF WORKS	UNIT	Q'TY	UNIT COST	AMOUNT	KIND	CASH
100	SITE INSTALLATION						
101	Site installation and mobilization of personnel	LS	1				
Sub Total Lot 100							
200	STRUCTURES						
201	Construction of spring catchment	U	1				
202	Construction of Intze Storage tank 15m3	U	1				
203	Construction of Suction Tank 15m3	U	1				
204	Construction of Stand taps	U	4				
205	Installation of Solar Pump with all subjections	U	1				
206	Construction of low/High point Chambers	U	0				
207	Construction of control valve chambers	U	2				
Sub Total Lot 200							
300	EARTH WORKS						
301	Excavation of Pipe line	ML	3,146				
302	Backfilling of pipe line	ML	3,146				
Sub Total 300							
400	PIPE WORKS						
401	PVC Ø 63mm NP10	ML	0				
402	PVC Ø 50mm NP10	ML	0				
403	PVC Ø 40mm NP10	ML	2,433				
404	PVC Ø 32mm NP10	ML	313				
405	PVC Ø 25mm NP10	ML	400				
406	Fittings/accessories	LS	1				
407	Labour Plumbing	LS	1				
Sub Total Lot 400							
500	OTHERS						
503	Transportation	LS	1				
504	Tool box	LS	1				
Sub Total Lot 500							
TOTAL COST OF PROJECT							

COST ANALYSIS	
KIND	
CASH	
TOTAL COST OF PROJECT	

COST SHEARING	
VILLAGE CONTRIBUTION IN KIND	
VILLAGE CONTRIBUTION IN CASH	
EXTERNAL ASSISTANCE	
TOTAL COST OF PROJECT	

BOQ FOR THE CONSTRUCTION OF MOKOV/PASTORAL CENTER WATER SUPPLY							
LOT	DESIGNATION OF WORKS	UNIT	Q'TY	UNIT COST	AMOUNT	KIND	CASH
100	SITE INSTALLATION						
101	Site installation and mobilization of personnel	LS	1				
Sub Total Lot 100							
200	STRUCTURES						
201	Construction of spring catchment at Romnzdev, Ngang Karle and Mokov	U	3				
202	Construction of Storage Tank 15m3 at Ensung	U	1				
	Construction of Intze Tank 15m3 at Pastoral Center, 6m High	U	1				
203	Construction of Stand taps	U	10				
204	Construction of Stream crossings	U	5				
205	Construction of low/High point Chambers	U	5				
206	Construction of control valve chambers	U	2				
Sub Total Lot 200							
300	EARTH WORKS						
301	Excavation of Pipe line	ML	14,030				
302	Backfilling of pipe line	ML	14,030				
Sub Total 300							
400	PIPE WORKS						
401	PVC Ø 63mm NP10	ML	0				
402	PVC Ø 50mm NP10	ML	8,614				
403	PVC Ø 40mm NP10	ML	3,381				
404	PVC Ø 32mm NP10	ML	1535				
405	PVC Ø 25mm NP10	ML	500				
406	Fittings/accessories	LS	1				
407	Labour Plumbing	LS	1				

	Sub Total Lot 400					
500	OTHERS					
503	Transportation	LS	1			
504	Tool box	LS	1			
	TOTAL COST OF PROJECT					

COST ANALYSIS	
KIND	
CASH	
TOTAL COST OF PROJECT	

COST SHEARING	
VILLAGE CONTRIBUTION IN KIND	
VILLAGE CONTRIBUTION IN CASH	
EXTERNAL ASSISTANCE	
TOTAL COST OF PROJECT	

BOQ FOR THE CONSTRUCTION OF NGOTONG NTUMBE WATER SUPPLY							
LOT	DESIGNATION OF WORKS	UNIT	Q'TY	UNIT COST	AMOUNT	KIND	CASH
100	SITE INSTALLATION						
101	Site installation and mobilization of personnel	LS	1				
	Sub Total Lot 100						
200	STRUCTURES						
201	Construction of spring catchment	U	2				
202	Construction of Storage tank 30m3 (Ngotong/Ntumbe Down)	U	1				
203	Construction of Storage tank 5m3 (Ntumbe Up)	U	1				
204	Construction of Stand taps	U	11				
205	Construction of Stream crossings	U	3				
206	Construction of low/High point Chambers	U	3				
207	Construction of control valve chambers	U	3				
	Sub Total Lot 200						
300	EARTH WORKS						
301	Excavation of Pipe line	ML	6,258				
302	Backfilling of pipe line	ML	6,258				

	Sub Total 300					
400	PIPE WORKS					
401	PVC Ø 63mm NP10	ML	0			
402	PVC Ø 50mm NP10	ML	1,948			
403	PVC Ø 40mm NP10	ML	2,897			
404	PVC Ø 32mm NP10	ML	613			
405	PVC Ø 25mm NP10	ML	800			
406	Fittings/accessories	LS	1			
407	Labour Plumbing	LS	1			
	Sub Total Lot 400					
500	OTHERS					
503	Transportation	LS	1			
504	Tool box	LS	1			
	Sub Total Lot 500					
	TOTAL COST OF PROJECT					

COST SHEARING	
KIND	
CASH	
TOTAL COST OF PROJECT	

COST SHEARING	
VILLAGE CONTRIBUTION IN KIND	
VILLAGE CONTRIBUTION IN CASH	
EXTERNAL ASSISTANCE	
TOTAL COST OF PROJECT	

BOQ FOR THE CONSTRUCTION OF SAAH WATER SUPPLY							
LOT	DESIGNATION OF WORKS	UNIT	Q'TY	UNIT COST	AMOUNT	KIND	CASH
100	SITE INSTALLATION						
101	Site installation and mobilization of personnel	LS	1				
	Sub Total Lot 100						
200	STRUCTURES						
201	Construction of spring catchment at Mada and below market square	U	2				
202	Construction of Distribution tank 25m3 at CBC Church hill	U	1				
203	Construction of Suction Tank 25m3 at Mada	U	1				
204	Construction of storage	U	1				

	tank10m3 below the market						
205	Installation of Complete Solar Pump with Control Box 4000W	U	1				
206	Construction of Stand taps	U	14				
207	Construction of Stream crossings	U	2				
208	Construction of low/High point Chambers	U	2				
209	Construction of control valve chambers	U	3				
Sub Total Lot 200							
300	EARTH WORKS						
301	Excavation of Pipe line	ML	10,757				
302	Backfilling of pipe line	ML	10,757				
Sub Total 300							
400	PIPE WORKS						
401	PVC Ø 63mm NP10	ML	0				
402	PVC Ø 50mm NP10	ML	1,598				
403	PVC Ø 40mm NP10	ML	5,948				
404	PVC Ø 32mm NP10	ML	2211				
405	PVC Ø 25mm NP10	ML	1000				
406	Fittings/accessories	LS	1				
407	Labour Plumbing	LS	1				
Sub Total Lot 400							
500	OTHERS						
503	Transportation	LS	1				
504	Tool box	LS	1				
Sub Total Lot 500							
TOTAL COST OF PROJECT							

COST SHEARING	
KIND	
CASH	
TOTAL COST OF PROJECT	

SUMMARY YEAR ONE PROJECTS

S/N	Project	Kind	Cash	Total Budget
1	Kumanji Binshua Water Project			
2	Mokov/Pastoral Center Water project			
3	Ngotong Ntumbe Water project			
4	Saah Water Project			
	Total			

BOQ FOR THE CONSTRUCTION OF FINGONG WATER SUPPLY							
LOT	DESIGNATION OF WORKS	UNIT	Q'TY	UNIT COST	AMOUNT	KIND	CASH
100	SITE INSTALLATION						
101	Site installation and mobilization of personnel	LS	1				
Sub Total Lot 100							
200	STRUCTURES						
201	Construction of spring catchment	U	1				
202	Construction of Storage tank 15m3	U	1				
203	Construction of 8 stand taps with complete installations	U	8				
204	Construction of Stream crossings	U	3				
205	Construction of low/High point Chambers	U	4				
206	Construction of control valve chambers	U	2				
Sub Total Lot 200							
300	EARTH WORKS						
301	Excavation of Pipe line	ML	5,804				
302	Backfilling of pipe line	ML	5,804				
Sub Total 300							
400	PIPE WORKS						
401	PVC Ø 63mm NP10	ML	0				
402	PVC Ø 50mm NP10	ML	3,336				
403	PVC Ø 40mm NP10	ML	200				
404	PVC Ø 32mm NP10	ML	1768				
405	PVC Ø 25mm NP10	ML	500				
406	Fittings/accessories	LS	1				
407	Labour Plumbing	LS	1				
Sub Total Lot 400							
500	OTHERS						
503	Transportation	LS	1				
504	Tool box	LS	1				
Sub Total Lot 500							
TOTAL COST OF PROJECT							

COST SHEARING	
KIND	
CASH	
TOTAL COST OF PROJECT	

BOQ FOR THE CONSTRUCTION OF LADIBAI WATER SUPPLY							
LOT	DESIGNATION OF WORKS	UNIT	Q'TY	UNIT COST	AMOUNT	KIND	CASH
100	SITE INSTALLATION						
101	Site installation and mobilization of personnel	LS	1				
Sub Total Lot 100							
200	STRUCTURES						
201	Construction of spring catchment at Ensung	U	2				
202	Construction of Storage Tank 30m3 at Ensung	U	1				
203	Construction of Stand taps	U	12				
204	Construction of Stream crossings	U	7				
205	Construction of low/High point Chambers	U	6				
206	Construction of control valve chambers	U	2				
Sub Total Lot 200							
300	EARTH WORKS						
301	Excavation of Pipe line	ML	9,592				
302	Backfilling of pipe line	ML	9,592				
Sub Total 300							
400	PIPE WORKS						
401	PVC Ø 63mm NP10	ML	0				
402	PVC Ø 50mm NP10	ML	3,881				
403	PVC Ø 40mm NP10	ML	4,611				
404	PVC Ø 32mm NP10	ML	400				
405	PVC Ø 25mm NP10	ML	700				
406	Fittings/accessories	LS	1				
407	Labour Plumbing	LS	1				
Sub Total Lot 400							
500	OTHERS						
503	Transportation	LS	1				
504	Tool box	LS	1				
Sub Total Lot 500							
TOTAL COST OF PROJECT							

COST SHEARING	
KIND	
CASH	
TOTAL COST OF PROJECT	

SUMMARY YEAR TWO PROJECTS

<i>S/N</i>	<i>Project</i>	<i>Kind</i>	<i>Cash</i>	<i>Total Budget</i>
1	Fingong Water Supply			
2	Ladibai Water Supply			
3	Bamfem Water Supply			
	Total			

BOQ FOR THE CONSTRUCTION OF BAMFEM WATER SUPPLY							
LOT	DESIGNATION OF WORKS	UNIT	Q'TY	UNIT COST	AMOUNT	KIND	CASH
100	SITE INSTALLATION						
101	Site installation and mobilization of personnel	LS	1				
	Sub Total Lot 100						
200	STRUCTURES						
201	Construction of spring catchment	U	1				
202	Construction of Distribution tank 15m3	U	1				
203	Construction of Suction Tank 15m3	U	1				
204	Installation of Complete Solar Pump with Control Box 4000W	U	1				
205	Construction of Stand taps	U	5				
208	Construction of control valve chambers	U	1				
	Sub Total Lot 200						
300	EARTH WORKS						
301	Excavation of Pipe line	ML	2,588				
302	Backfilling of pipe line	ML	2,588				
	Sub Total 300						
400	PIPE WORKS						
401	PVC Ø 63mm NP10	ML	0				
402	PVC Ø 50mm NP10	ML	1,568				
403	PVC Ø 40mm NP10	ML	212				
404	PVC Ø 32mm NP10	ML	408.9				
405	PVC Ø 25mm NP10	ML	400				
406	Fittings/accessories	LS	1				
407	Labour Plumbing	LS	1				
	Sub Total Lot 400						
500	OTHERS						
503	Transportation	LS	1				
504	Tool box	LS	1				
	Sub Total Lot 500						
	TOTAL COST OF						

PROJECT							
----------------	--	--	--	--	--	--	--

COST SHEARING	
KIND	
CASH	
TOTAL COST OF PROJECT	

BOQ FOR THE CONSTRUCTION OF NYAWU - DJOTTIN WATER SUPPLY, (FIRST PHASE)							
LOT	DESIGNATION OF WORKS	UNIT	Q'TY	UNIT COST	AMOUNT	KIND	CASH
100	SITE INSTALLATION						
101	Site installation and mobilization of personnel	LS	1				
Sub Total Lot 100							
200	STRUCTURES						
201	Construction of spring catchment	U	1				
202	Construction of Storage tank 60m3	U	1				
203	Construction of Stand taps	U	0				
204	Construction of Stream crossings	U	2				
205	Construction of low/High point Chambers	U	2				
206	Construction of control valve chambers	U	0				
Sub Total Lot 200							
300	EARTH WORKS						
301	Excavation of Pipe line	ML	0				
302	Backfilling of pipe line	ML	0				
Sub Total 300							
400	PIPE WORKS						
401	PVC Ø 63mm NP10	ML	2,414				
402	PVC Ø 50mm NP10	ML	0				
403	PVC Ø 40mm NP10	ML	0				
404	PVC Ø 32mm NP10	ML	0				
405	PVC Ø 25mm NP10	ML	0				
406	Fittings/accessories	LS	1				
407	Labour Plumbing	LS	0				
Sub Total Lot 400							
500	OTHERS						
503	Transportation	LS	1				
504	Tool box	LS	0				
Sub Total Lot 500							
TOTAL COST OF PROJECT							

COST SHEARING	
KIND	
CASH	
TOTAL COST OF PROJECT	

SUMMARY YEAR THREE PROJECTS

<i>S/N</i>	<i>Project</i>	<i>Kind</i>	<i>Cash</i>	<i>Total Budget</i>
1	Bamfem Water Supply			
2	Nyawu - Djottin Water Supply			
	Total			

Summary Of Project Cost for Three Years				
<i>Year</i>	<i>Component</i>	<i>Village Kind</i>	<i>Cash</i>	<i>Total</i>
ONE	Projects			
Two	Projects			
Three	Projects			
Total				

Document N^o. 6: **MODEL FORMS**

SOCIAL WELFARE DEPARTMENT - CARITAS KUMBO,
DIOCESE OF KUMBO,
P.O. BOX 115, KUMBO,
NORTH WEST REGION, CAMEROON

DECLARATION OF THE INTENTION TO TENDER

I, the undersigned,

Nationality

Function

In my capacity as General Manager of

hereby acknowledge receipt of the file for the Open National Invitation to tender ,

N^o of

About the

.....

.....

..... and hereby declare my intention to tender for the
said project.

DONE AT ON THE

THE GENERAL MANAGER

SOCIAL WELFARE DEPARTMENT - CARITAS KUMBO,
DIOCESE OF KUMBO,
P.O. BOX 115, KUMBO,
NORTH WEST REGION, CAMEROON

TENDER FORM

To: THE COORDINATOR,
CARITAS KUMBO

Dear Sir,

Having examined the bidding documents, the receipt of which is hereby duly acknowledged, I the undersigned offer to execute the,

In conformity with the said bidding documents for the sum of (total bid amount in words and figures)

—

I undertake, if my bid is accepted to execute the works within _____ months/days in accordance with the schedule specified in the methodology and planning of execution of works included in my tender.

I agree to abide by this bid for a period of () days from the date fixed for bid opening as included in the instructions to bidders, and it shall remain binding upon me and be accepted at any time before the expiration of that period.

Until a formal cancellation is prepared and executed, this together with your written acceptance thereof and your notification of award shall constitute a binding agreement between us.

I understand that you are not bound to accept the lowest of any bid you may receive.

Dated this ----- day of -----

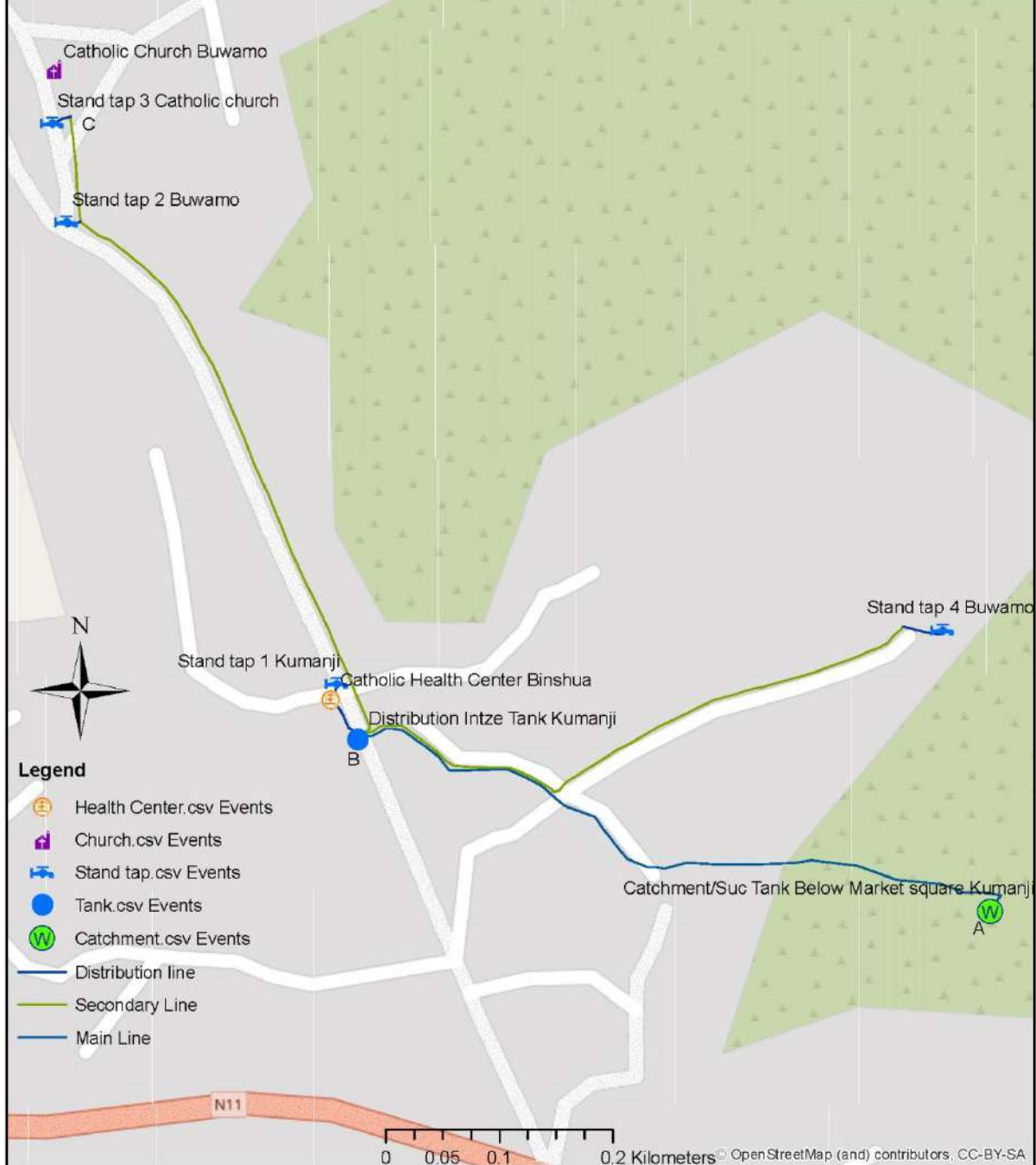
(Signature)

(In the capacity of)

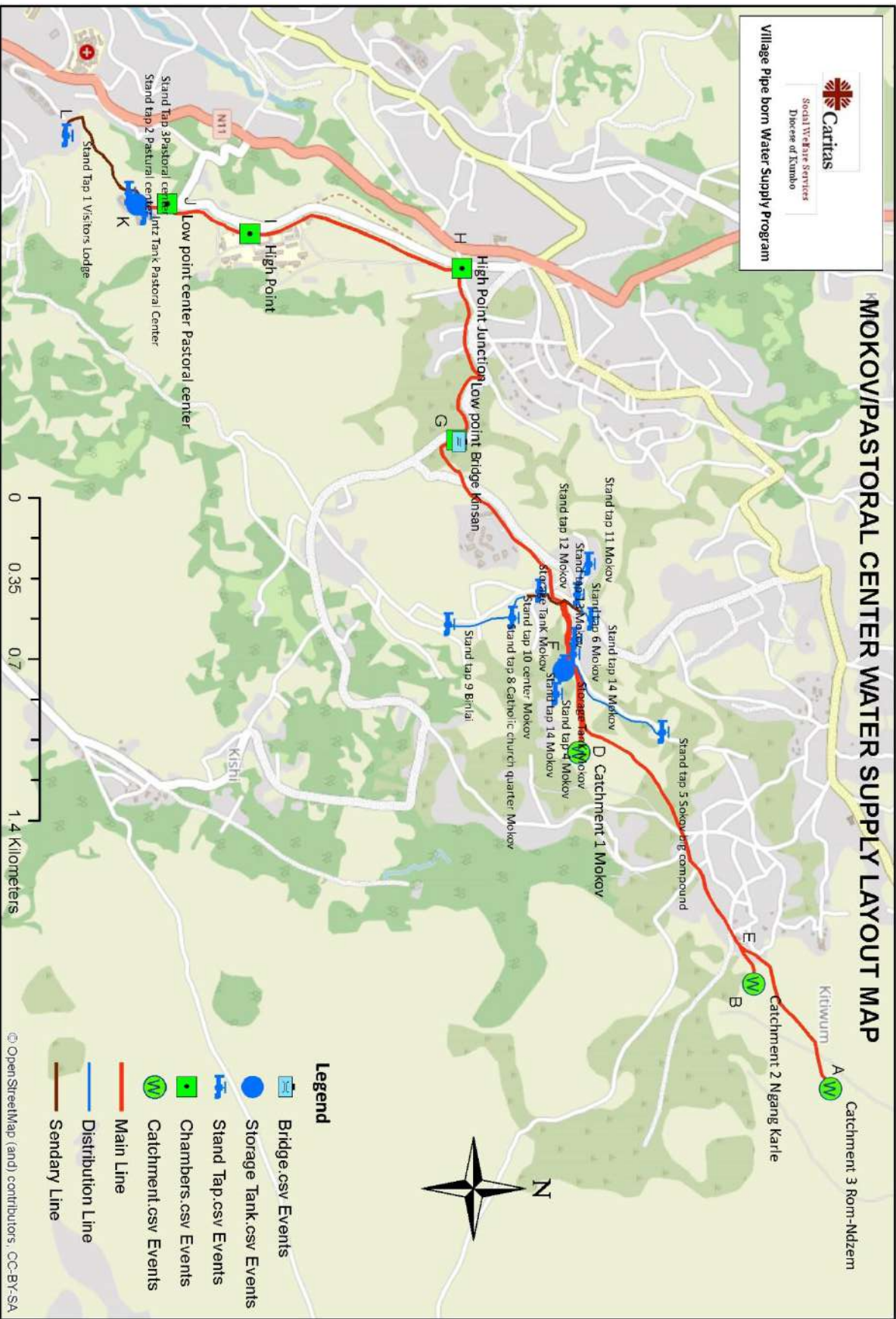
Duly authorized to sign bids for and on behalf of -----

Document N^o. 7: **SITUATION MAPS, TOPO MAPS
AND HYDRAULIC PROFILES**

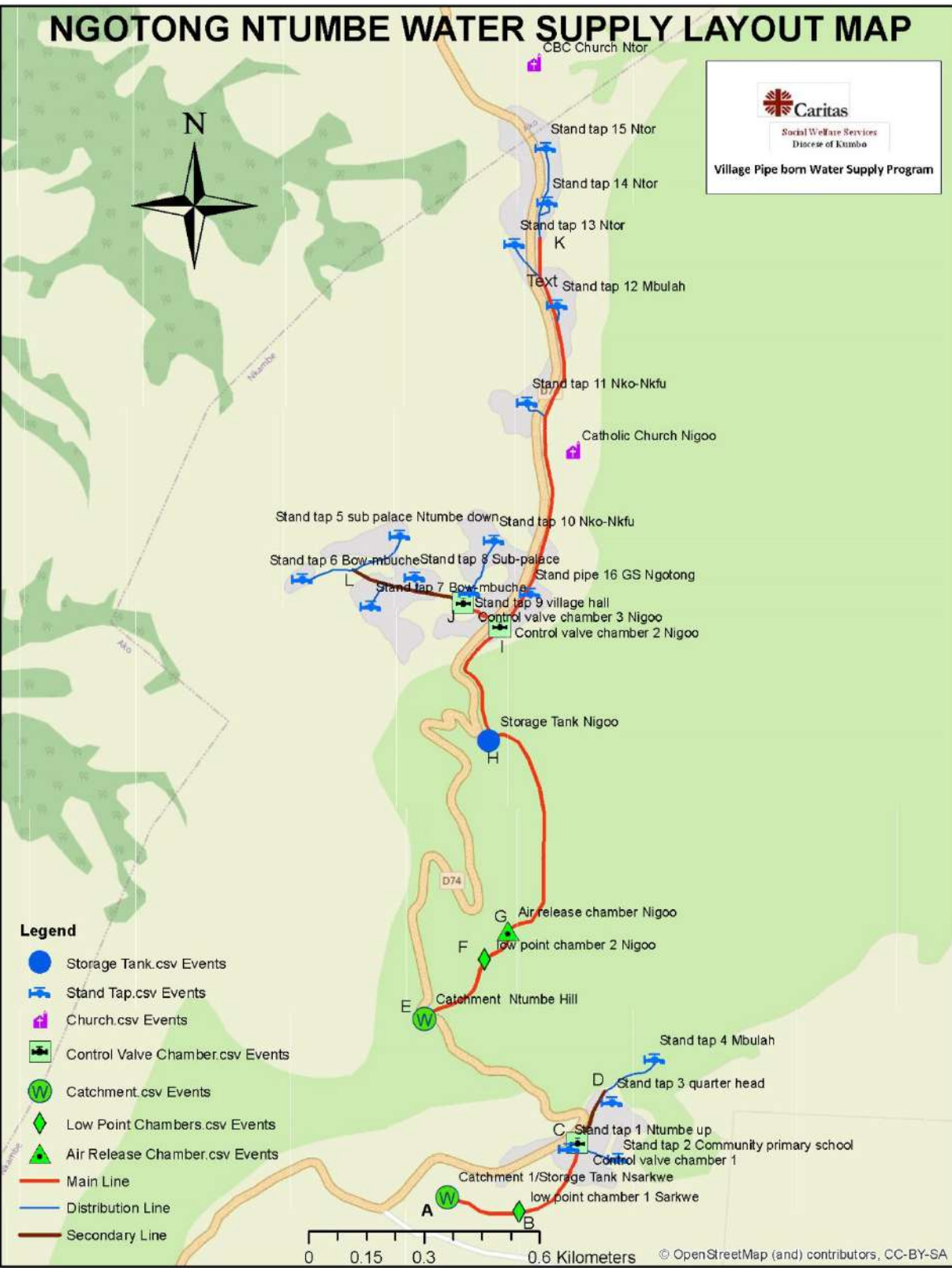
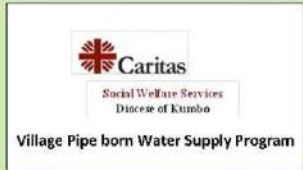
KUMANJI - BINSHUA WATER PROJECT LAYOUT MAP



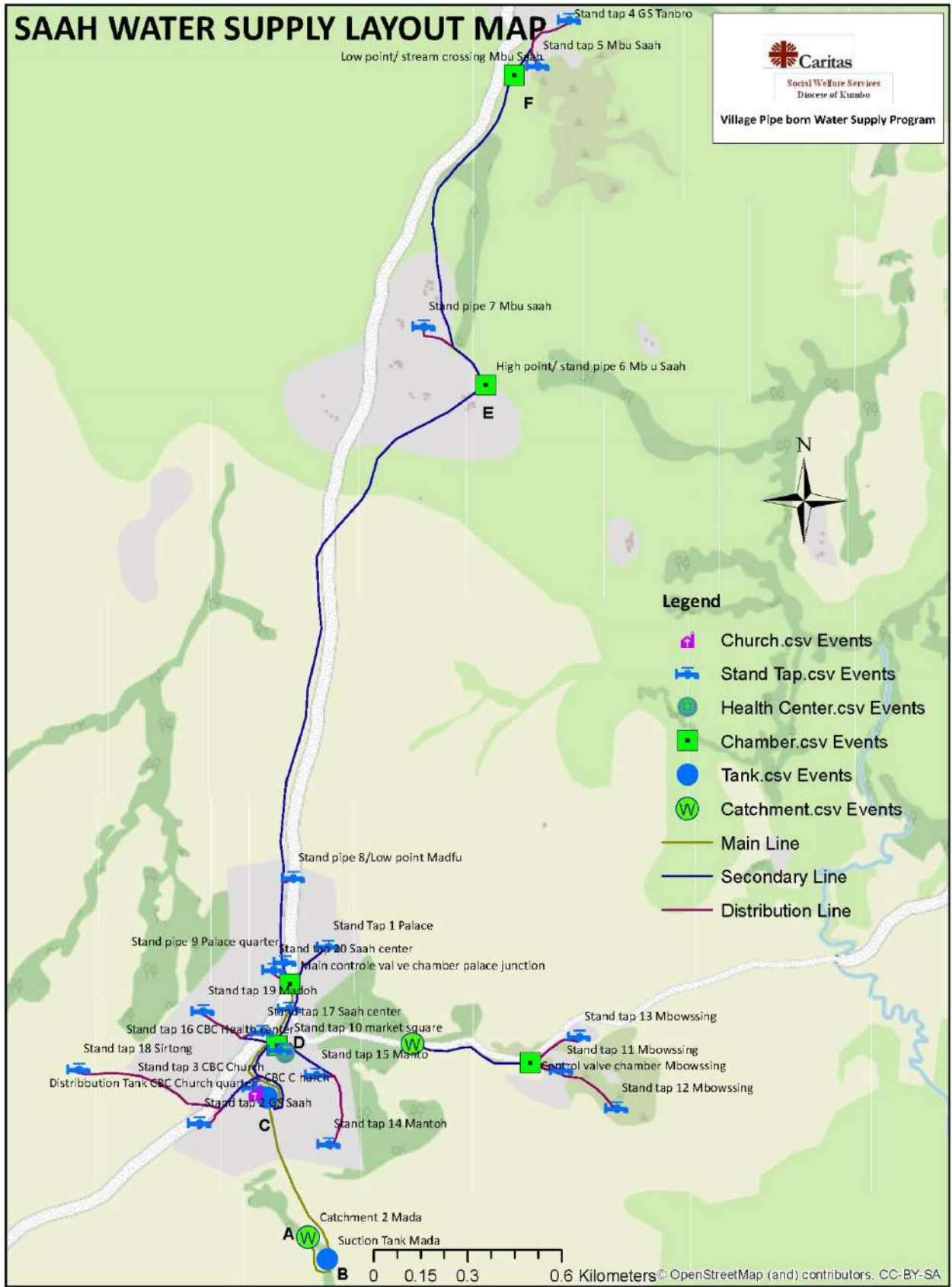
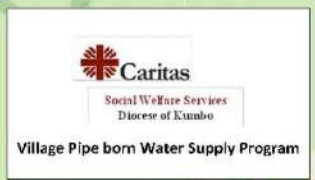
MOKOV/PASTORAL CENTER WATER SUPPLY LAYOUT MAP



NGOTONG NTUMBE WATER SUPPLY LAYOUT MAP



SAAH WATER SUPPLY LAYOUT MAP



FINGONG WATER PROJECT LAYOUT MAP

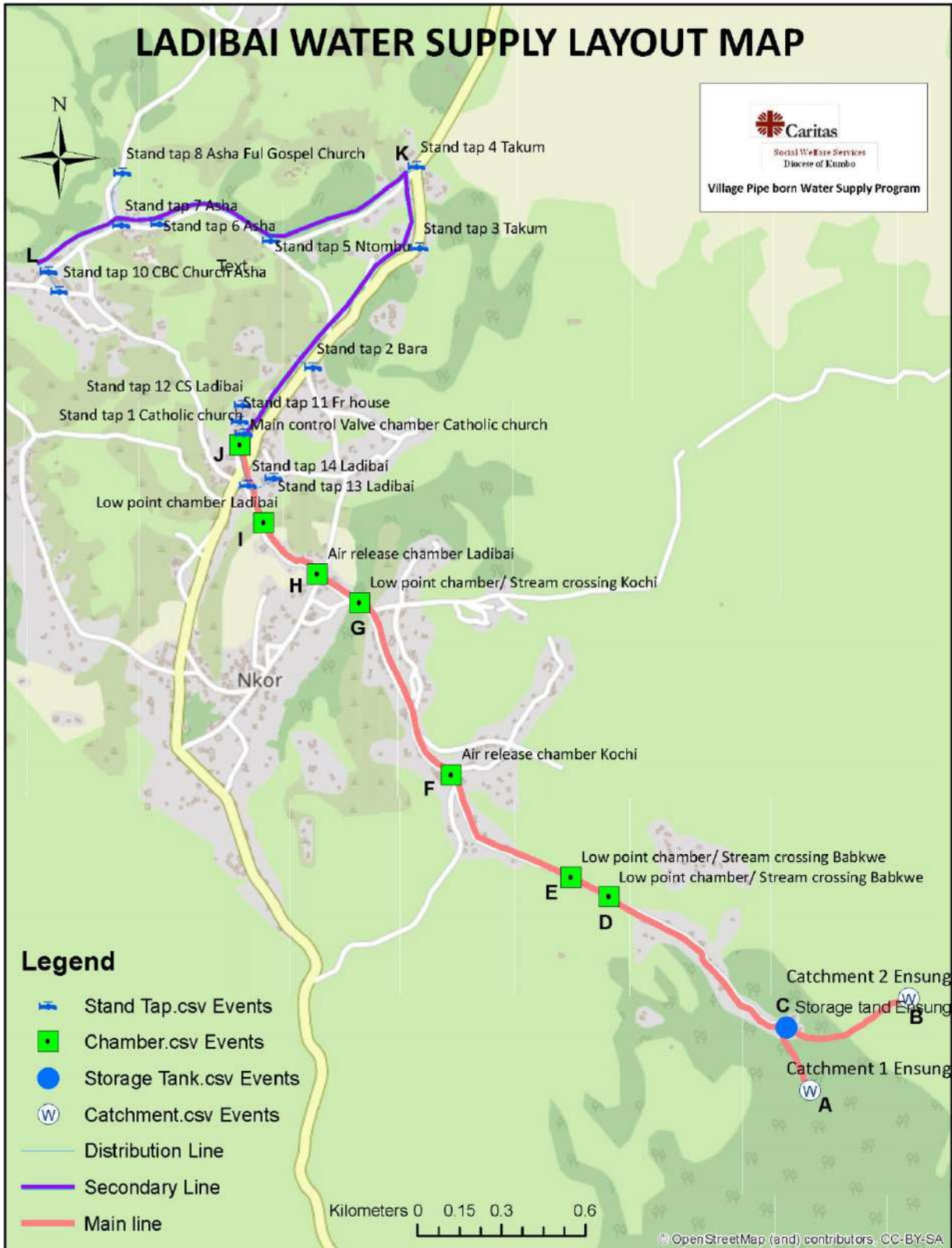


Caritas
Social Welfare Services
Diocese of Kumbo

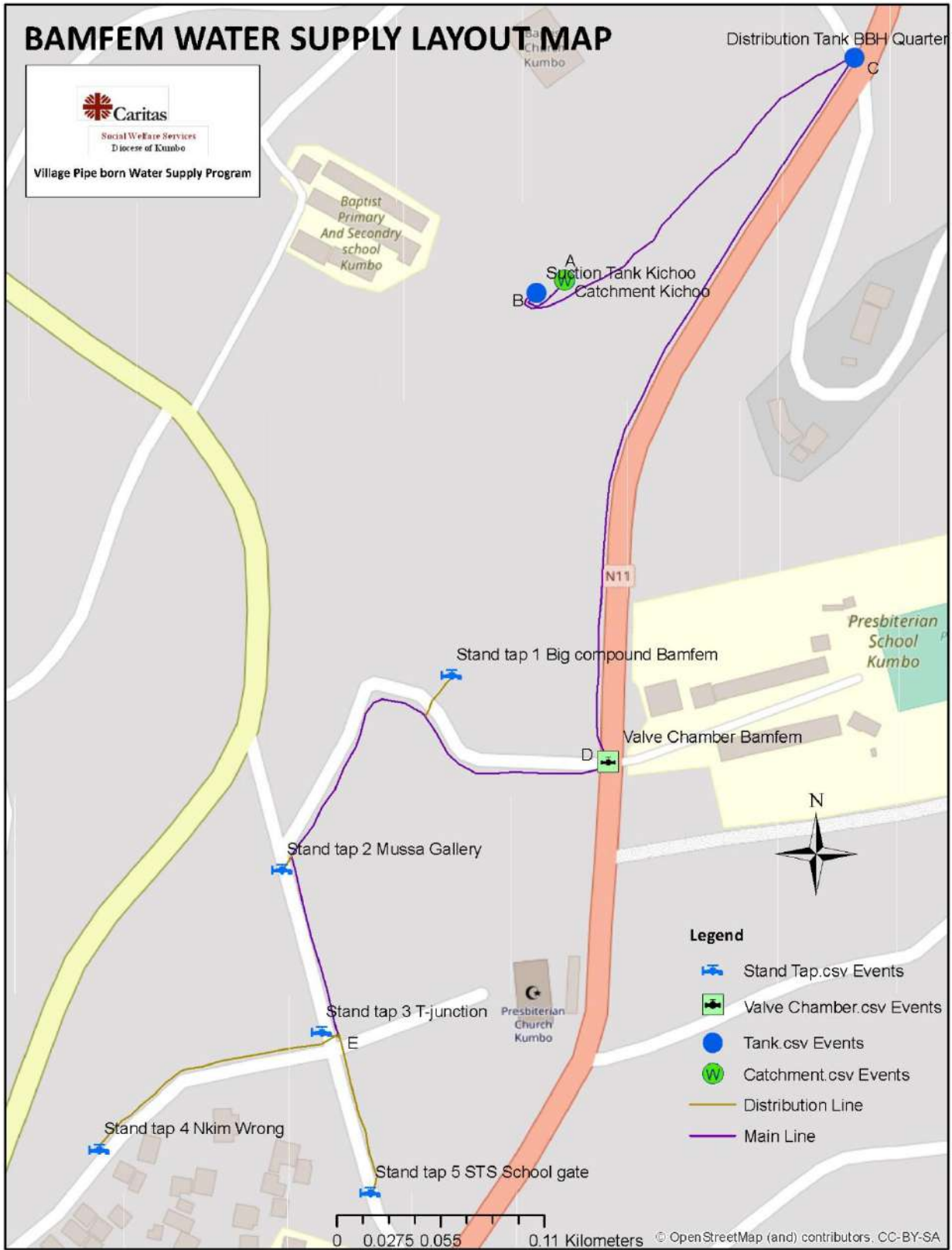
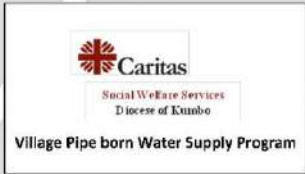
Village Pipe born Water Supply Program



LADIBAI WATER SUPPLY LAYOUT MAP



BAMFEM WATER SUPPLY LAYOUT MAP





TOPOGRAPHIC MAPS

KUMANJI - BISHUA WATER SUPPLY TOPOGRAPHIC MAP

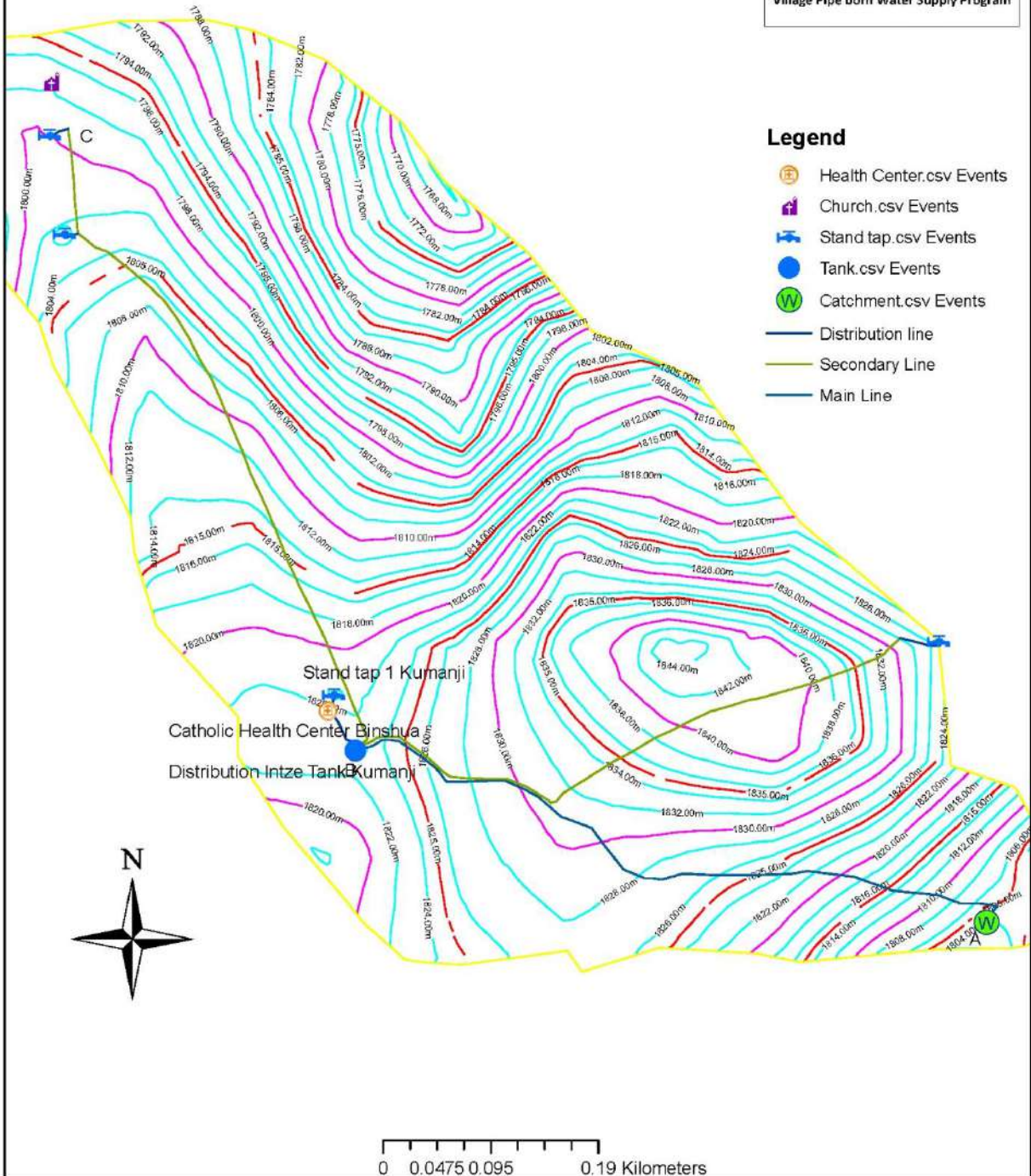


Social Welfare Services
Diocese of Kumbo

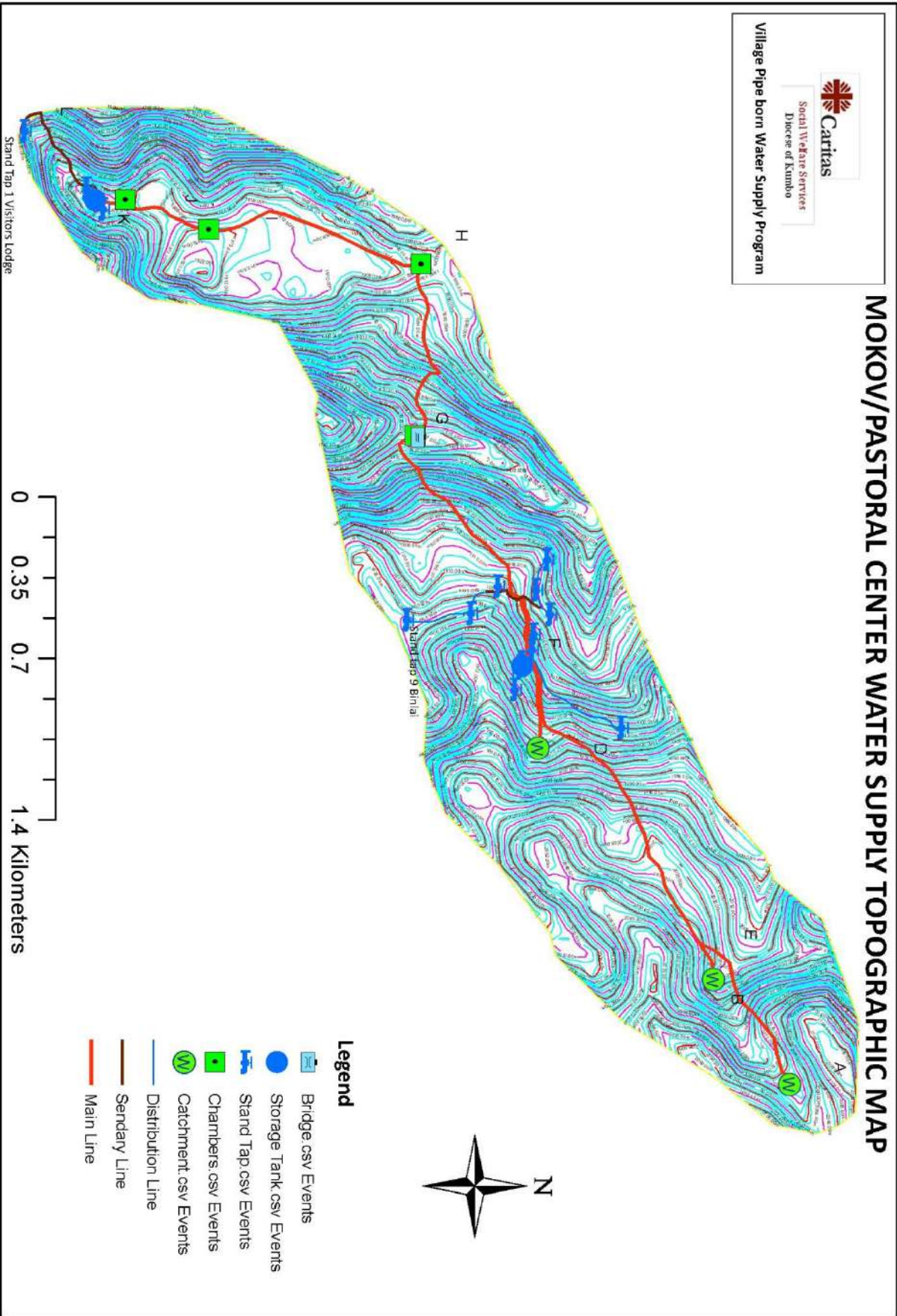
Village Pipe born Water Supply Program

Legend

- Health Center.csv Events
- Church.csv Events
- Stand tap.csv Events
- Tank.csv Events
- Catchment.csv Events
- Distribution line
- Secondary Line
- Main Line

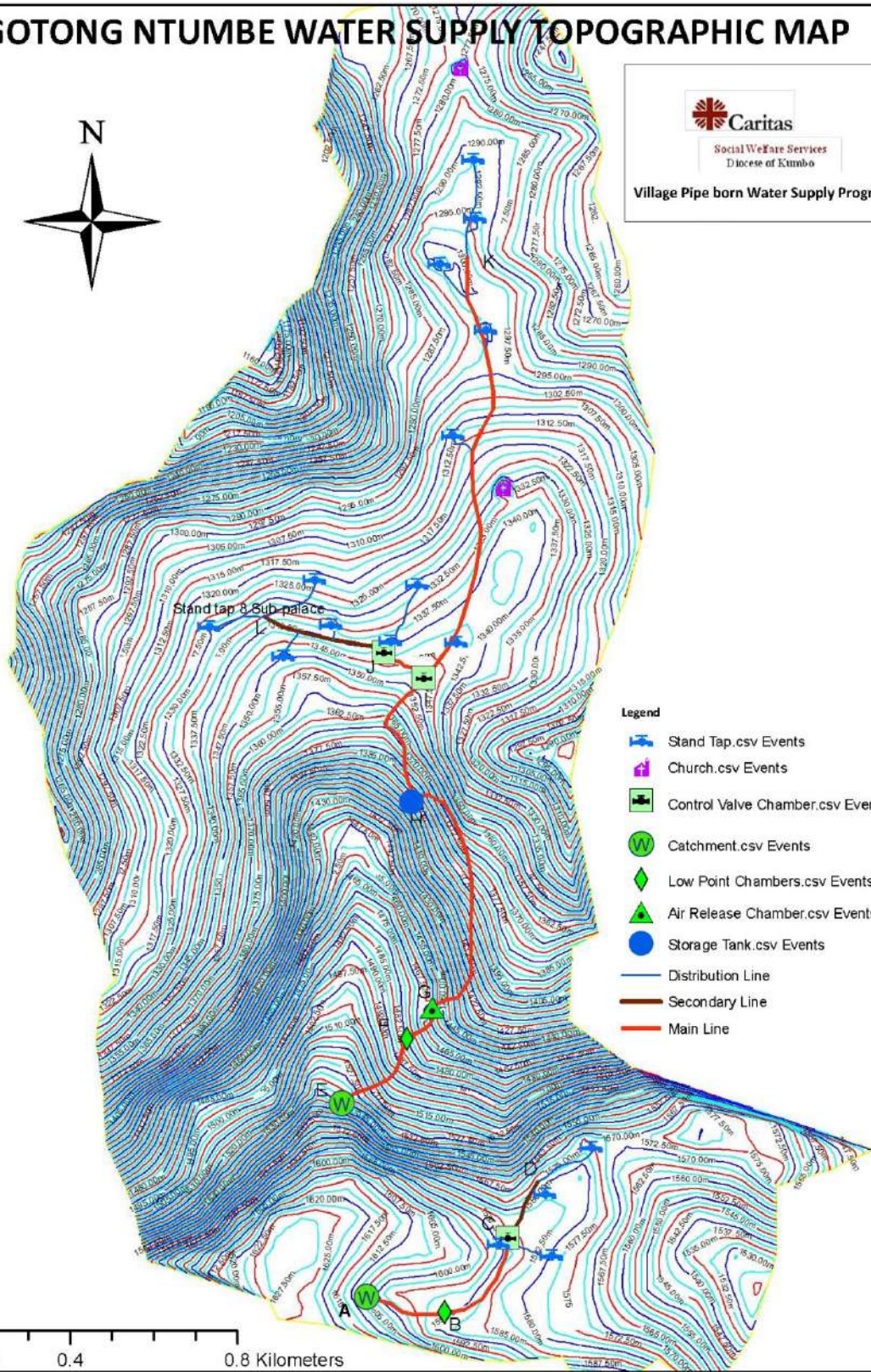


MOKOV/PASTORAL CENTER WATER SUPPLY TOPOGRAPHIC MAP



- Legend**
-  Bridge.csv Events
 -  Storage Tank.csv Events
 -  Stand Tap.csv Events
 -  Chambers.csv Events
 -  Catchment.csv Events
 -  Distribution Line
 -  Secondary Line
 -  Main Line

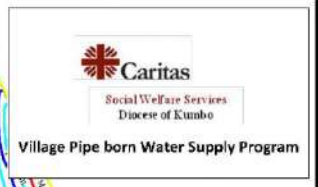
NGOTONG NTUMBE WATER SUPPLY TOPOGRAPHIC MAP



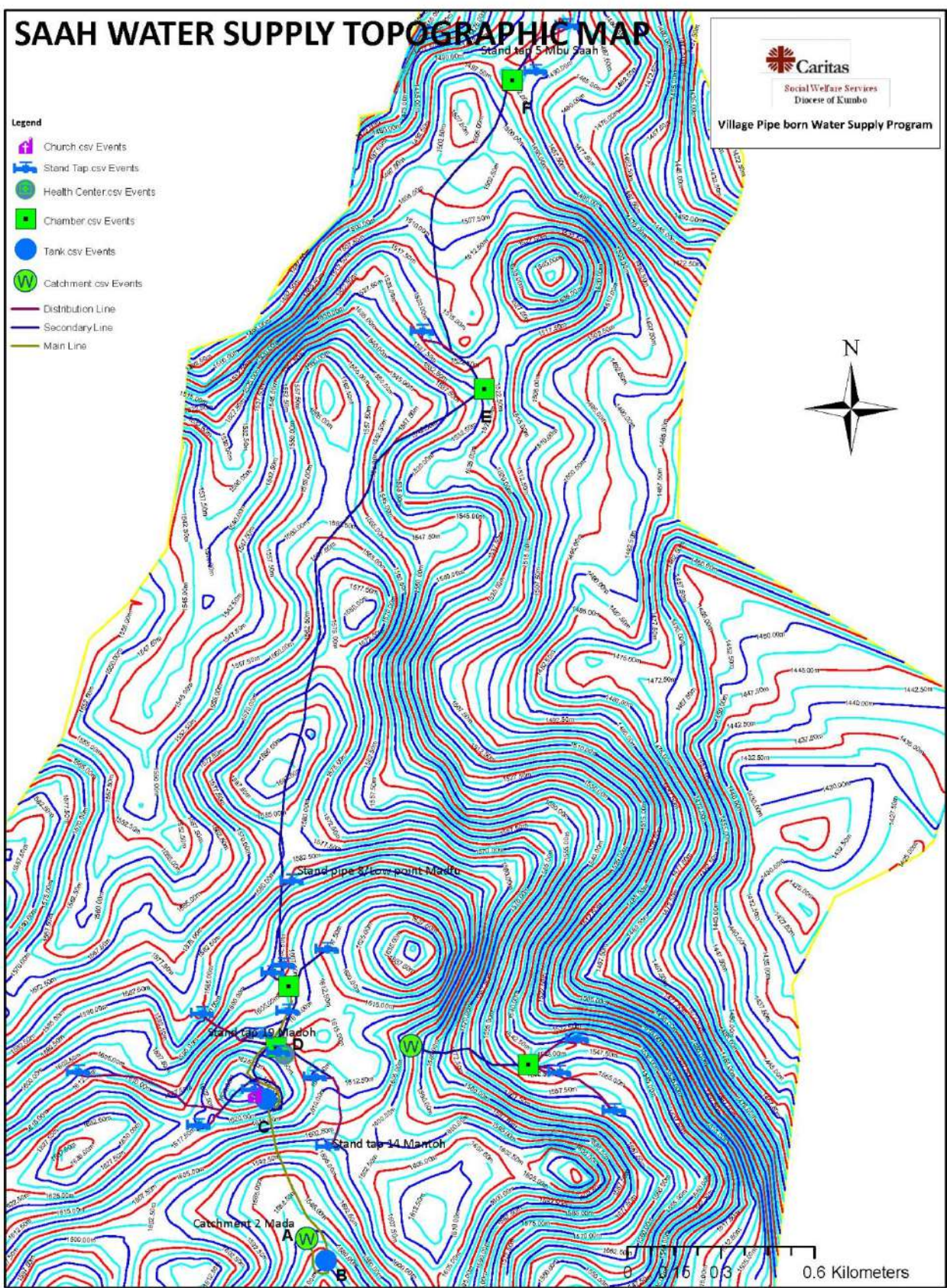
Legend

- Stand Tap.csv Events
- Church.csv Events
- Control Valve Chamber.csv Events
- Catchment.csv Events
- Low Point Chambers.csv Events
- Air Release Chamber.csv Events
- Storage Tank.csv Events
- Distribution Line
- Secondary Line
- Main Line

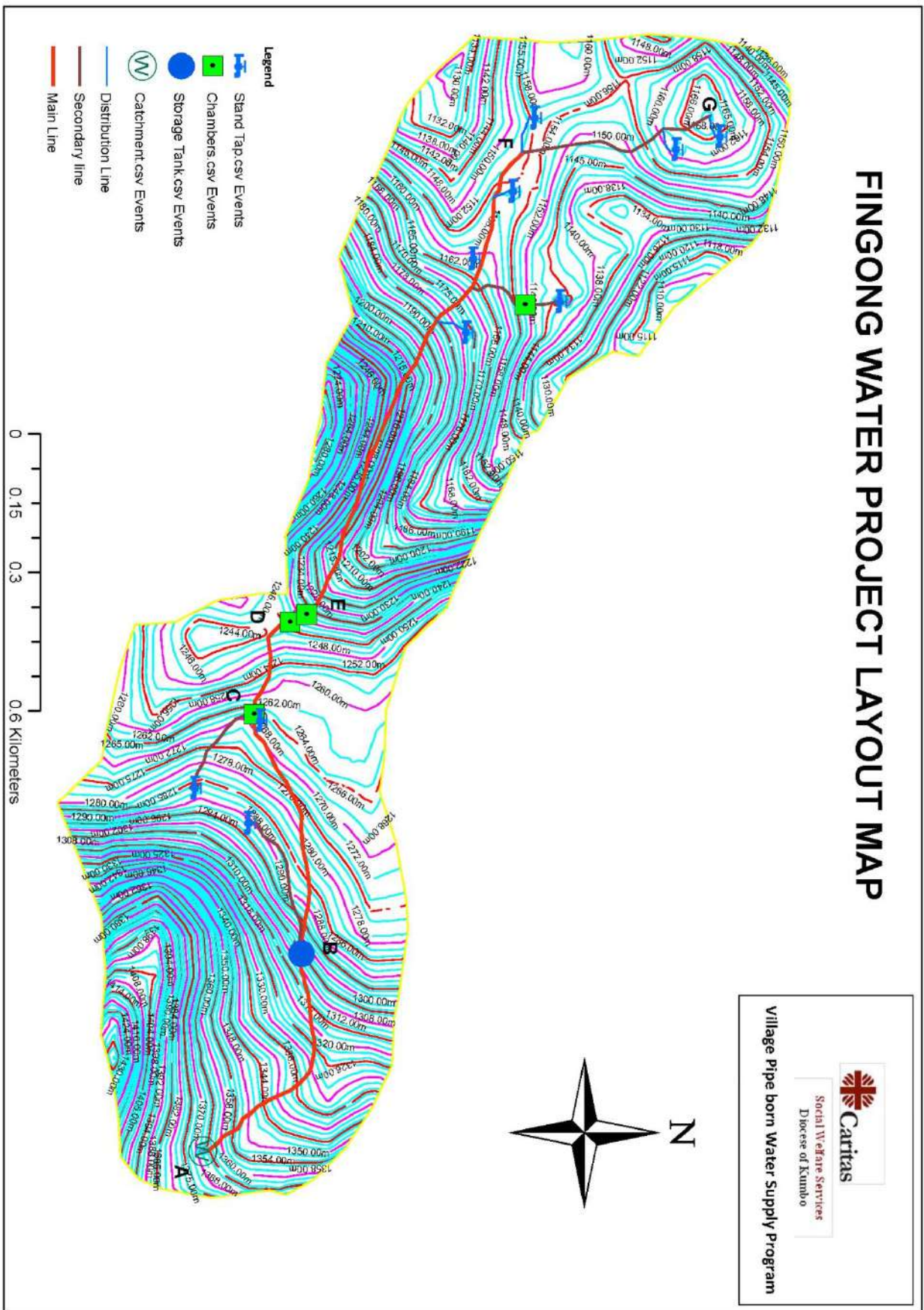
SAAH WATER SUPPLY TOPOGRAPHIC MAP



- Legend**
- Church.csv Events
 - Stand Tap.csv Events
 - Health Center.csv Events
 - Chamber.csv Events
 - Tank.csv Events
 - Catchment.csv Events
 - Distribution Line
 - Secondary Line
 - Main Line



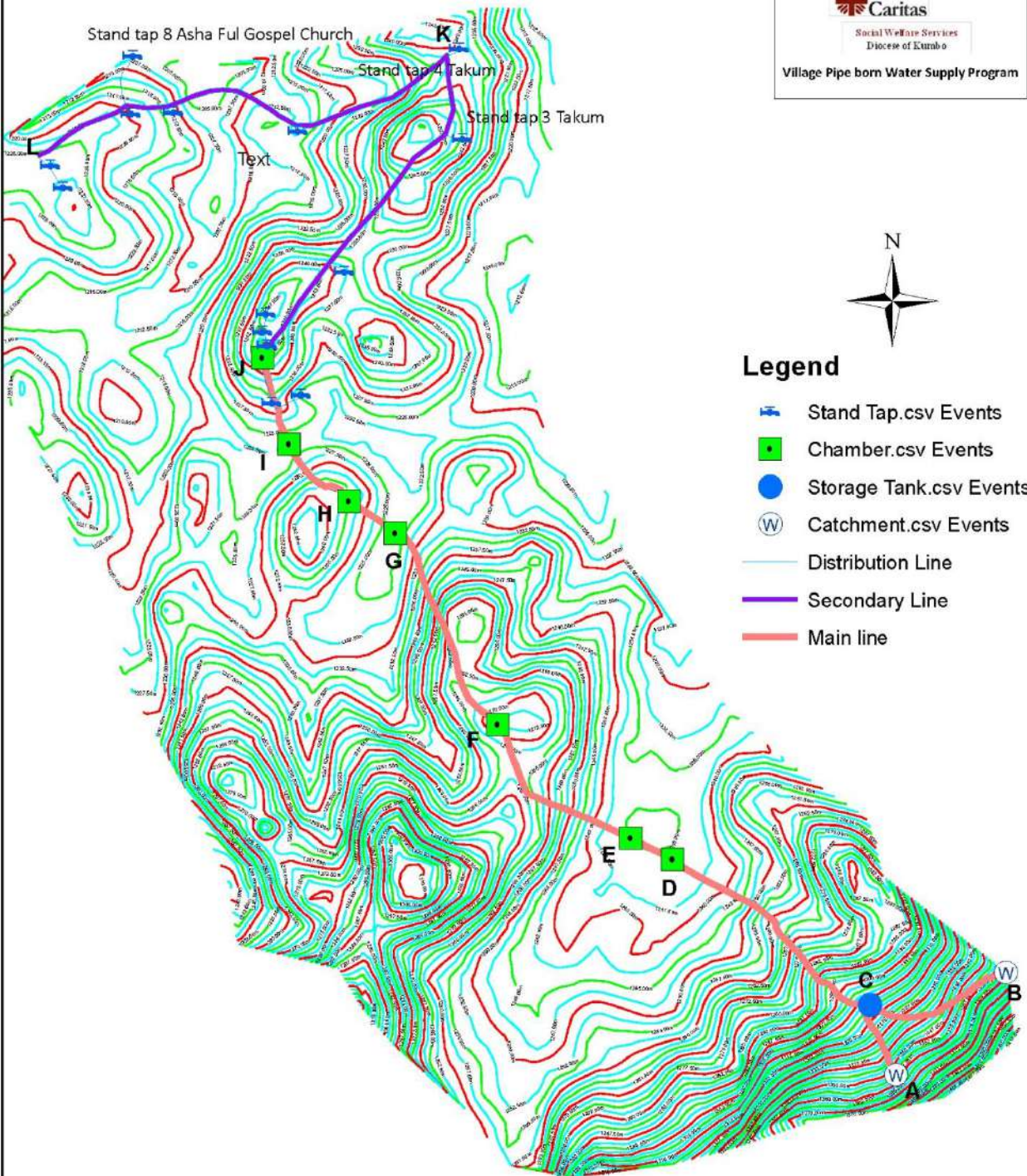
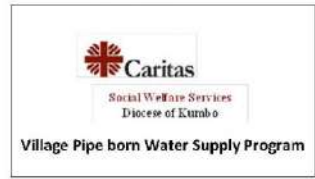
FINGONG WATER PROJECT LAYOUT MAP




Cartas
 Social Welfare Services
 Diocese of Kumho

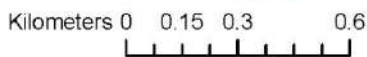
Village Pipe born Water Supply Program

LADIBAI WATER SUPPLY TOPOGRAPHIC MAP



Legend

- Stand Tap.csv Events
- Chamber.csv Events
- Storage Tank.csv Events
- Catchment.csv Events
- Distribution Line
- Secondary Line
- Main line

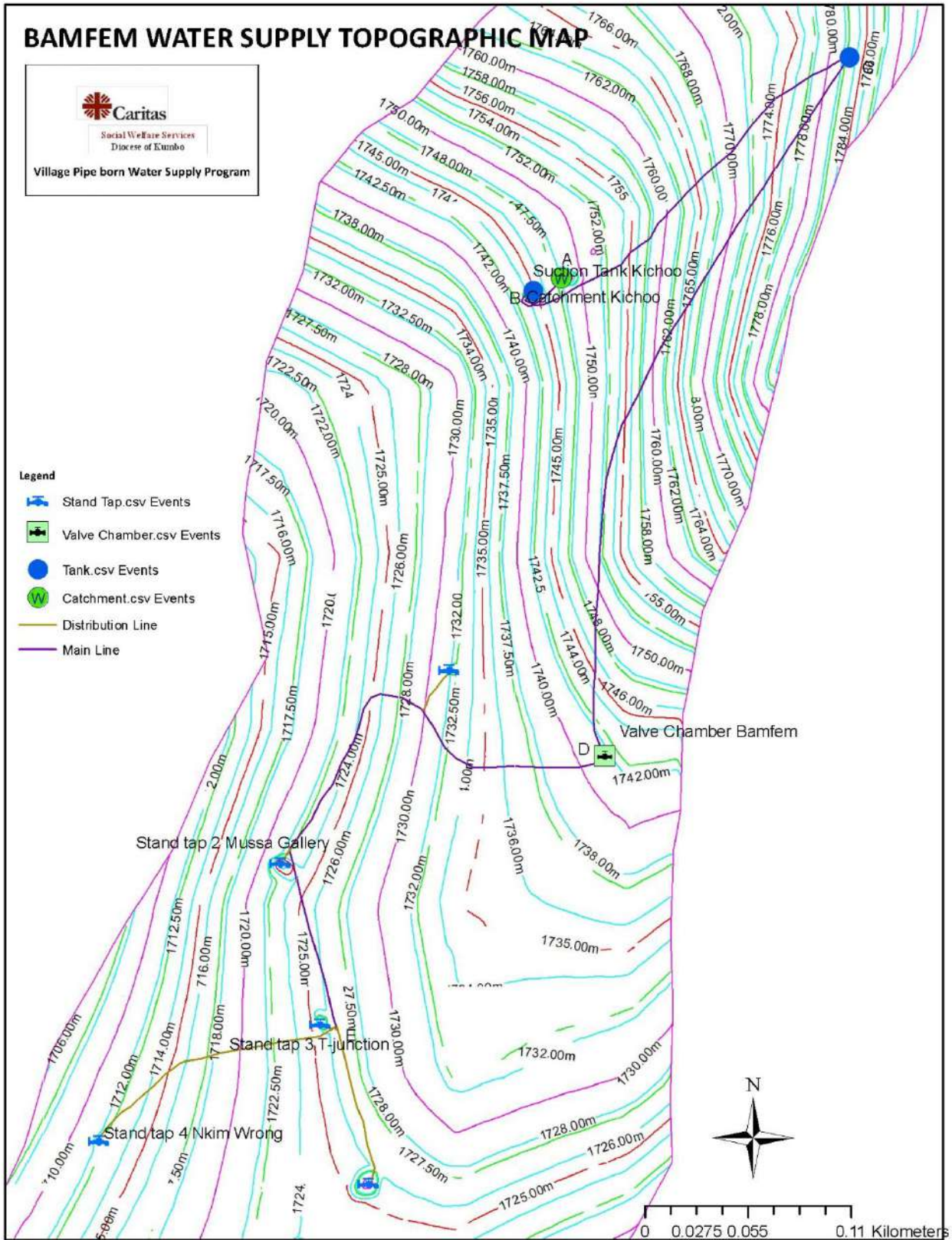


BAMFEM WATER SUPPLY TOPOGRAPHIC MAP



Legend

- Stand Tap.csv Events
- Valve Chamber.csv Events
- Tank.csv Events
- Catchment.csv Events
- Distribution Line
- Main Line

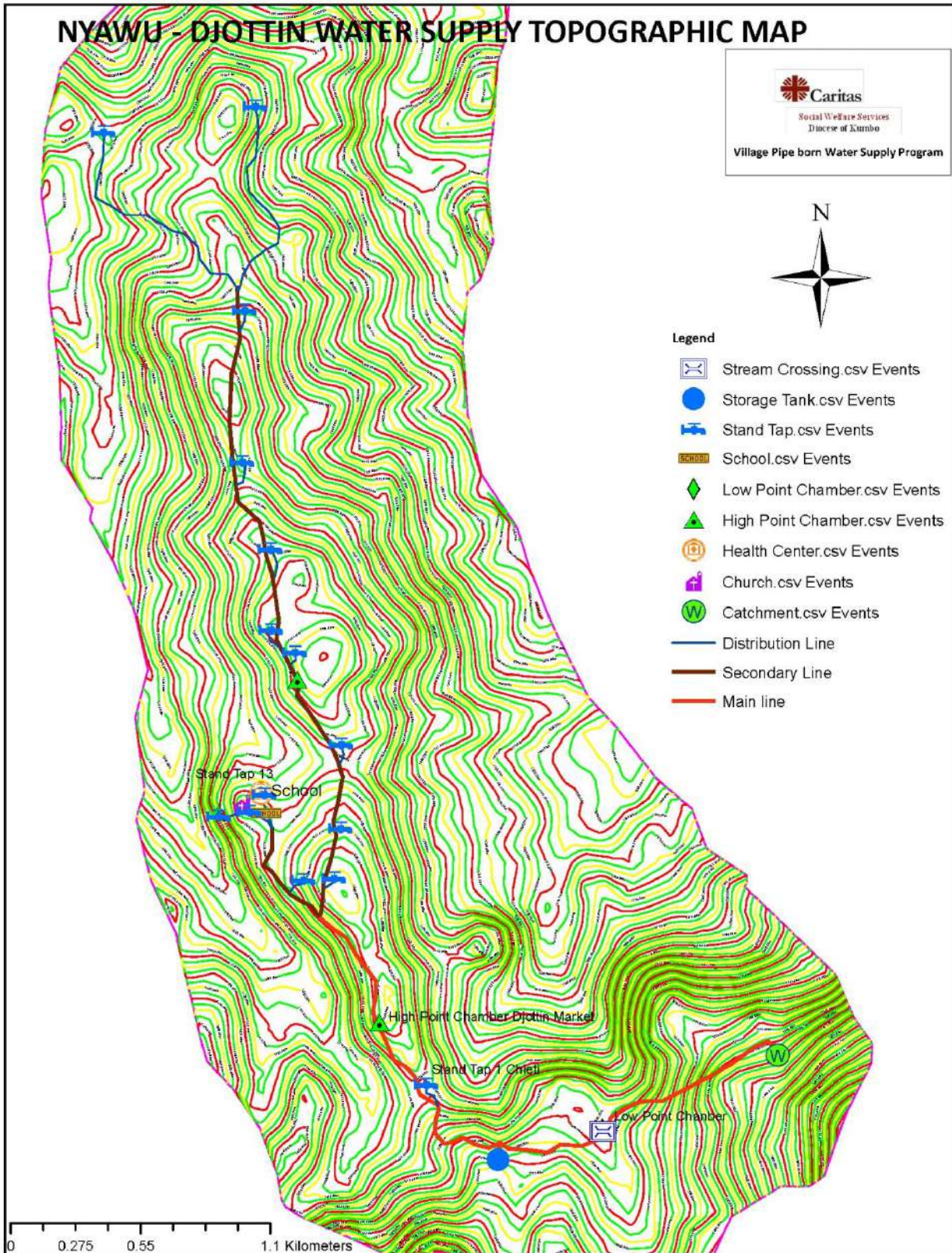


NYAWU - DJOTTIN WATER SUPPLY TOPOGRAPHIC MAP



Legend

- Stream Crossing.csv Events
- Storage Tank.csv Events
- Stand Tap.csv Events
- School.csv Events
- Low Point Chamber.csv Events
- High Point Chamber.csv Events
- Health Center.csv Events
- Church.csv Events
- Catchment.csv Events
- Distribution Line
- Secondary Line
- Main line



HYDRAULIC PROFILES

KUMANJI BINSHUA WATER SUPPLY HYDRAULIC PROFILE



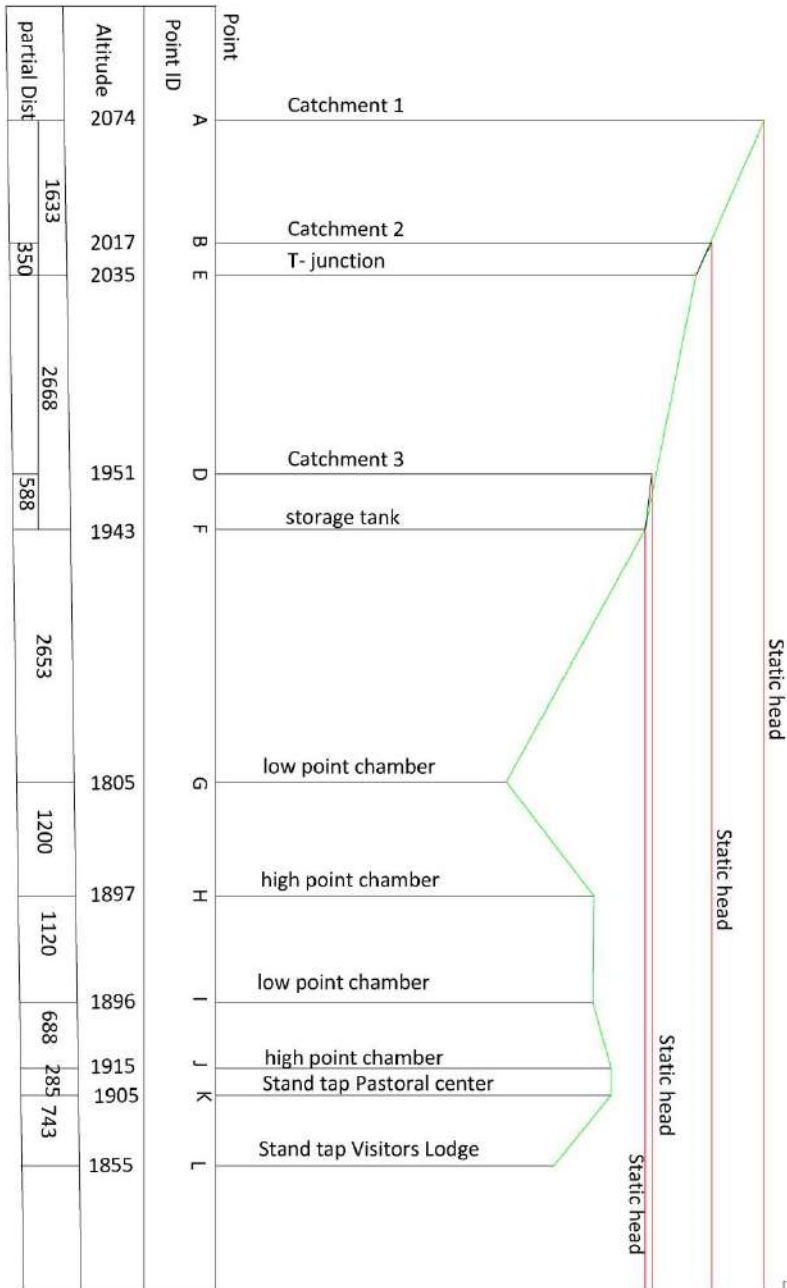
Point ID	Elevation(m)	Partial Distance(m)
A	1782	852.7
B	1833	729.2
D	1825	851
C	1799	

Static Head

Dynamic Head under Gravity

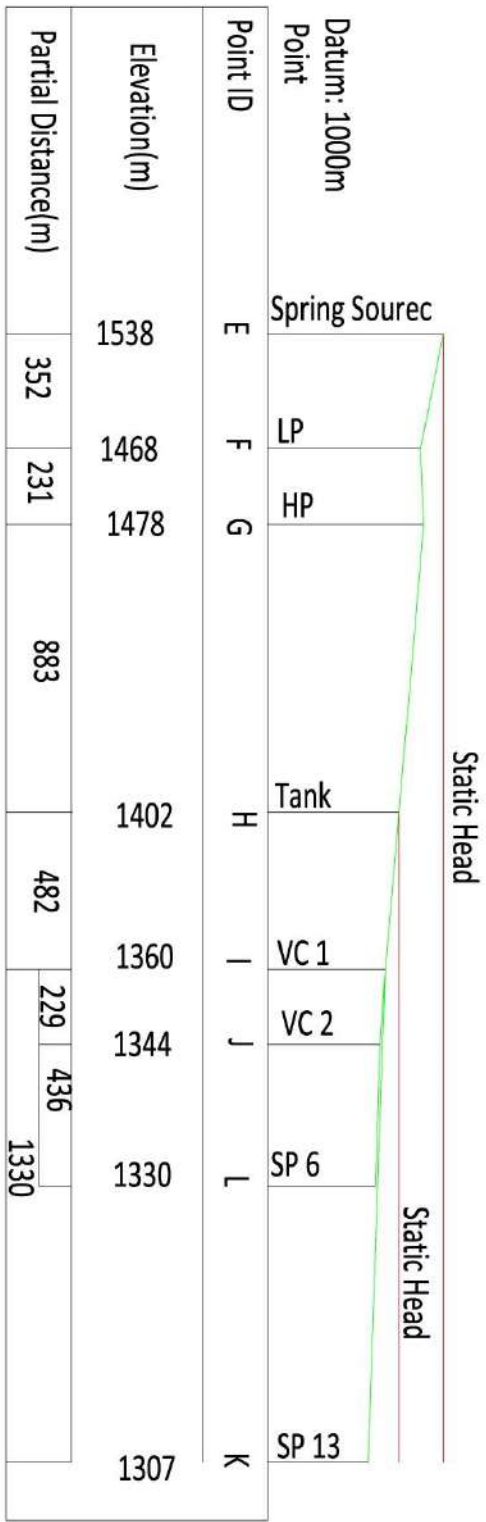
Dynamic Head under Pumping

MOKOV/PASTORAL CENTER WATER SUPPLY HYDRAULIC PROFILE



— Static Head
— Dynamic Head under Gravity
— Dynamic Head under Pumping

NGOTONG NTUMBE WATER SUPPLY HYDRAULIC PROFILE

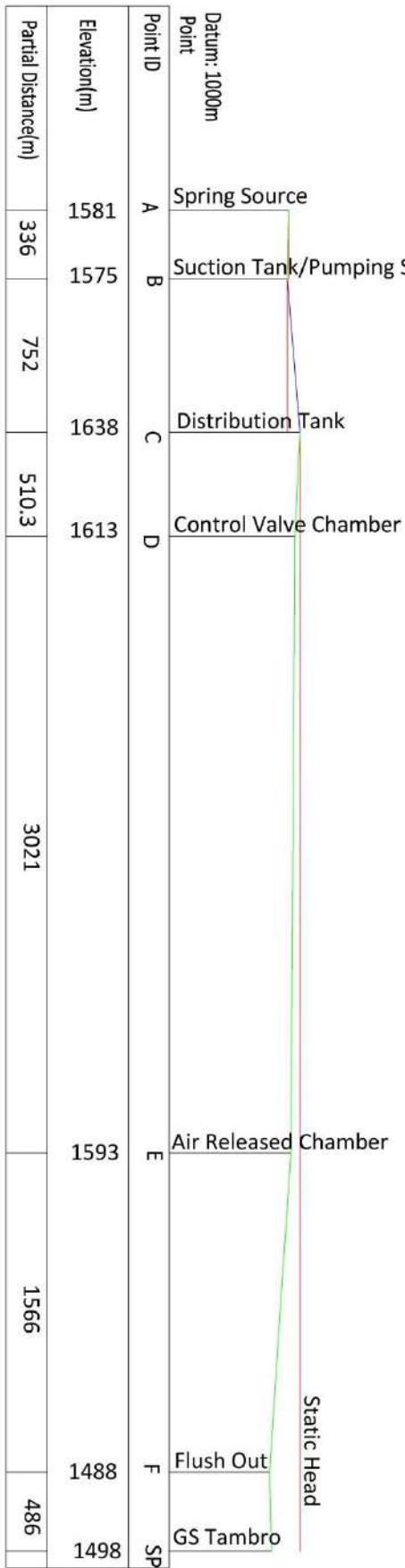


Static Head

Dynamic Head under Gravity

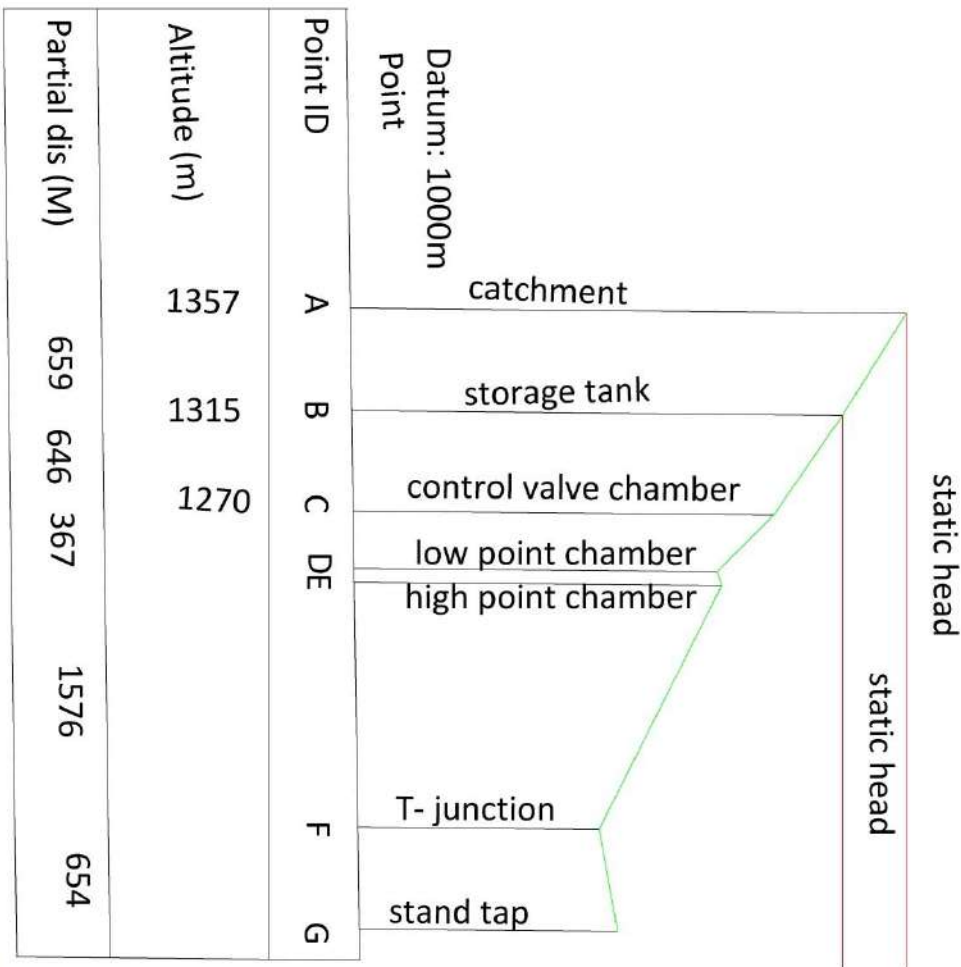
Dynamic Head under Pumping

SAAH WATER SUPPLY HYDRAULIC PROFILE



— Static Head
— Dynamic Head under Gravity
— Dynamic Head under Pumping

FINGONG WATER SUPPLY HYDRAULIC PROFILE

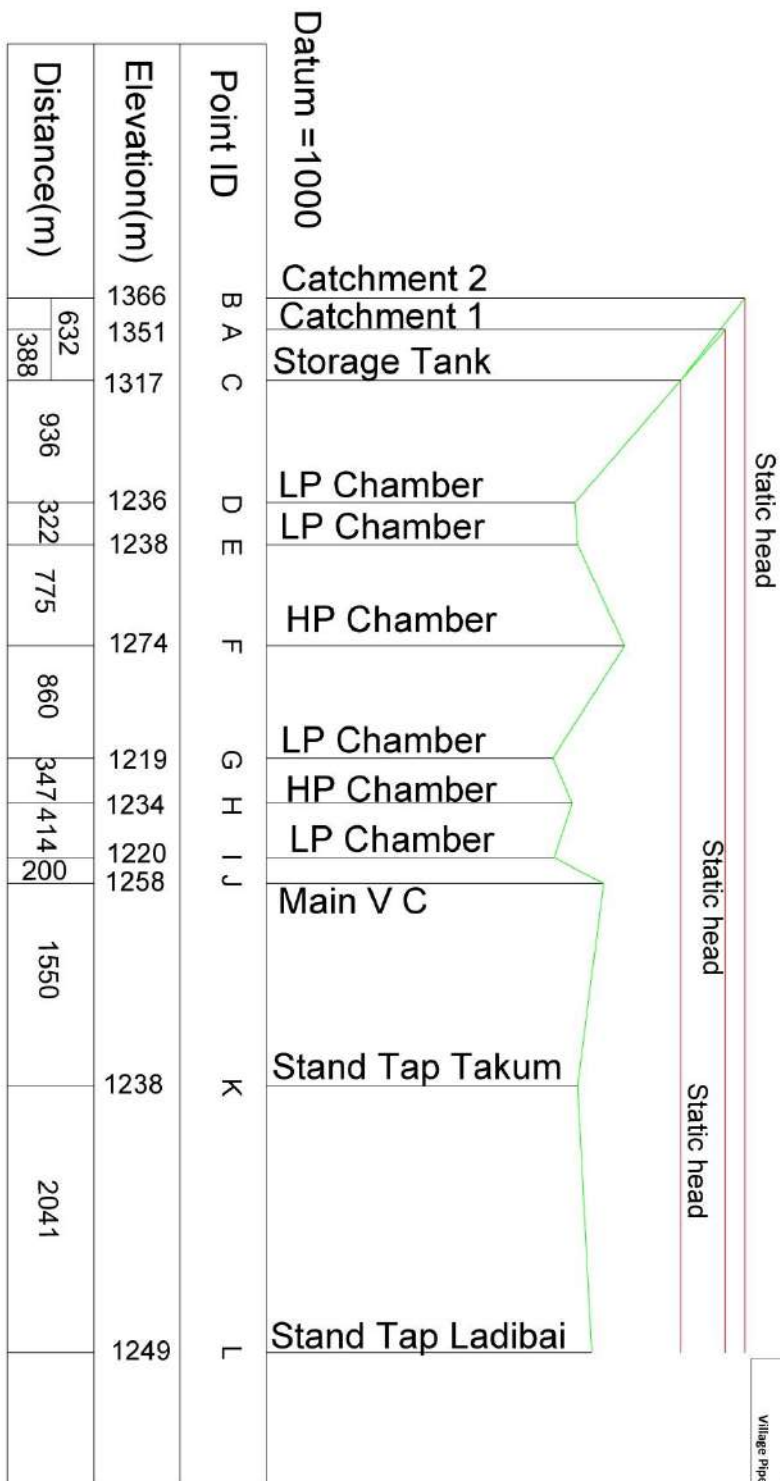


Point ID	Altitude (m)	Partial dis (M)
A	1357	659
B	1315	646
C	1270	367
DE		1576
F		654
G		



Static Head
 Dynamic Head under Gravity
 Dynamic Head under Pumping

LADIBAI WATER SUPPLY PROJECT HYDRAULIC PROFILE



Static head
Dynamic head
Demand head
Demand head

BAMFEM WATER SUPPLY HYDRAULIC PROFILE



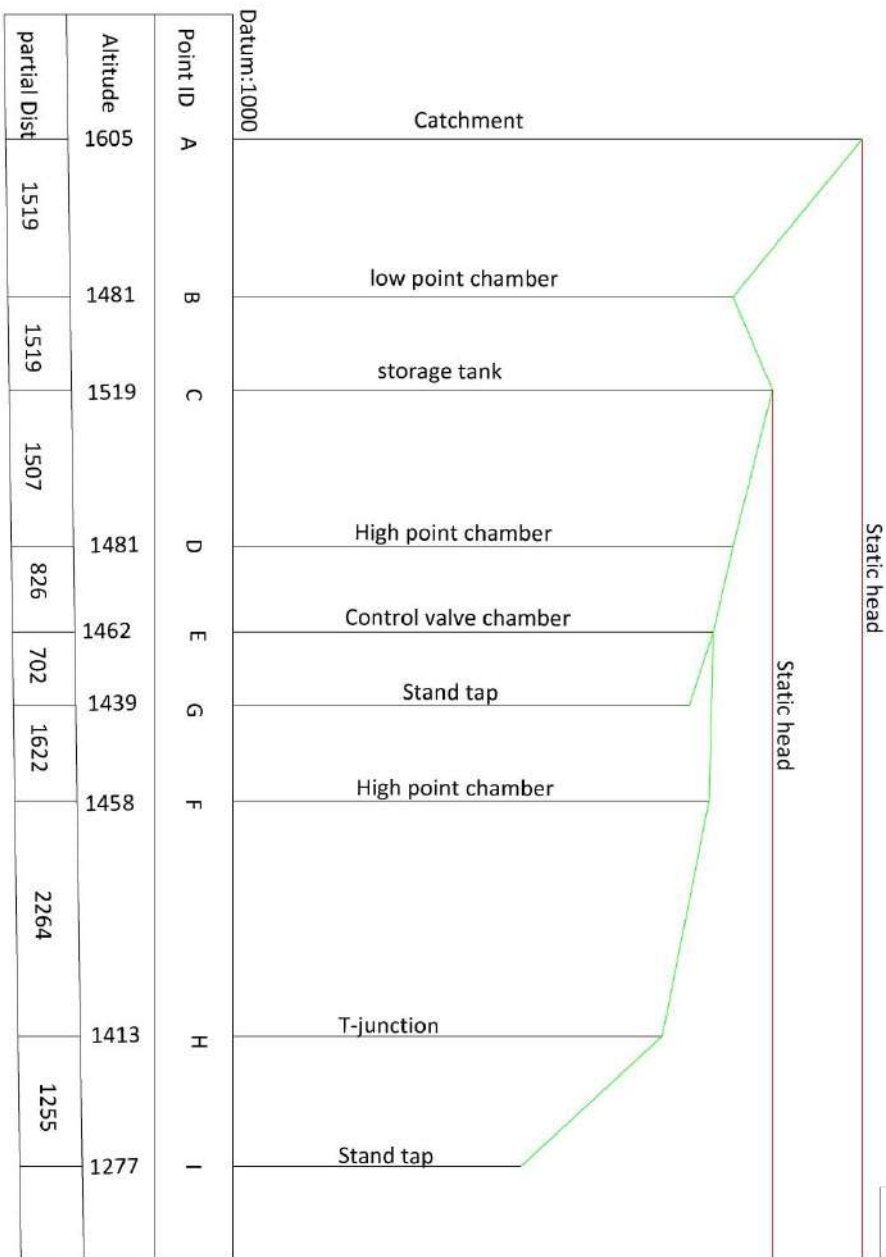
Datum: 1000m
Point



Point ID	Elevation(m)	Partial Distance(m)
A	1749	58.9
B	1735	347
C	1784	620
D	1747	541.9
E	1730	

Static Head
Dynamic Head under Gravity
Dynamic Head under Pumping

NYAWU - DJOTTIN WATER SUPPLY HYDRAULIC PROFILE

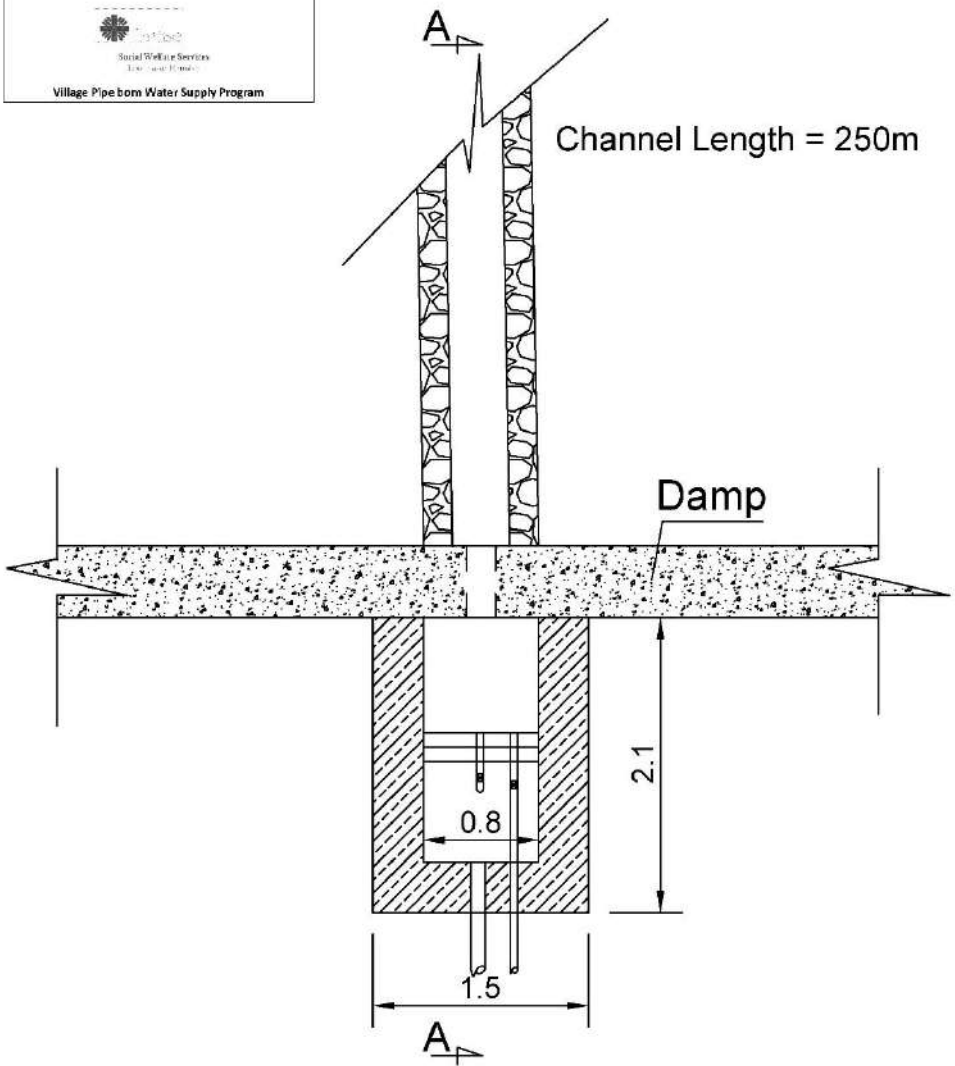


— Static Head
— Dynamic Head under Gravity
— Dynamic Head under Pumping



PLANS OF STRUCTURES

CATCHMENT



Channel Length = 250m

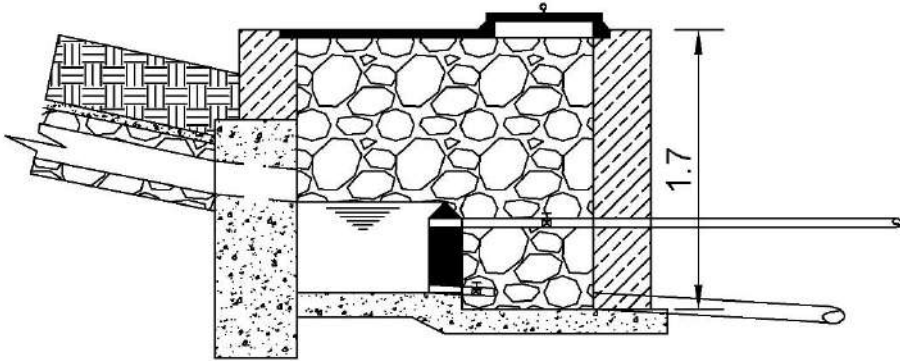
Damp

2.1

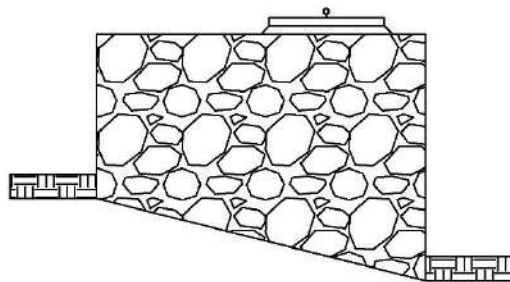
0.8

1.5

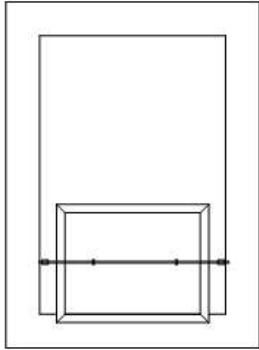
PLAN



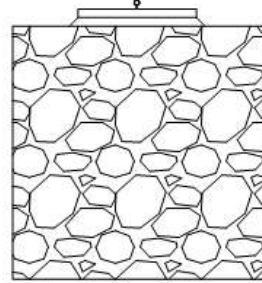
SECTION A-A



SIDE VIEW

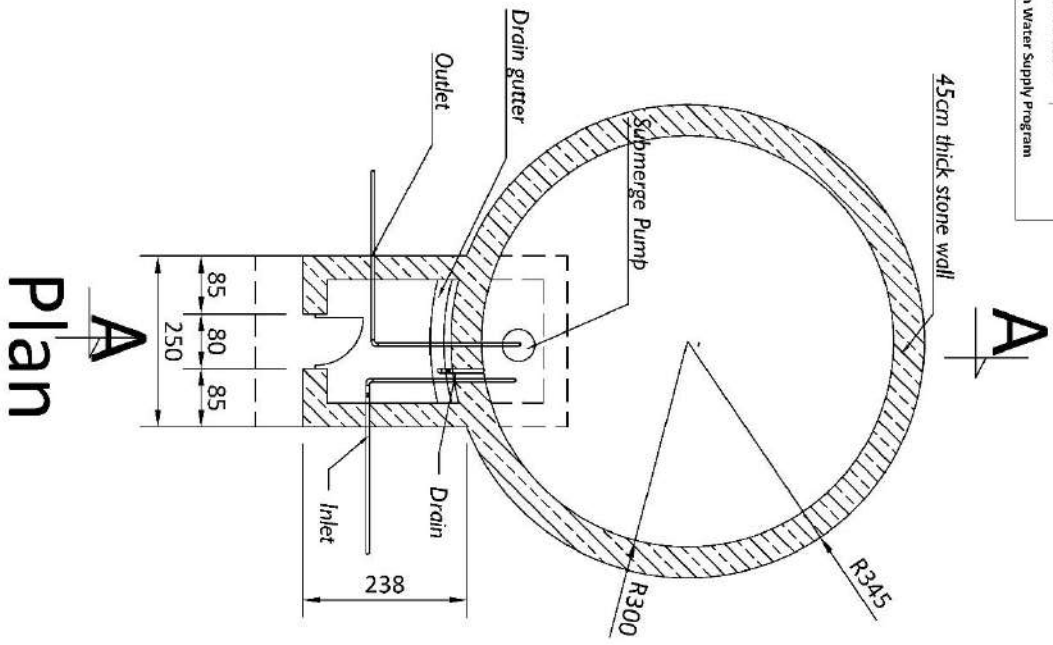


TOP VIEW

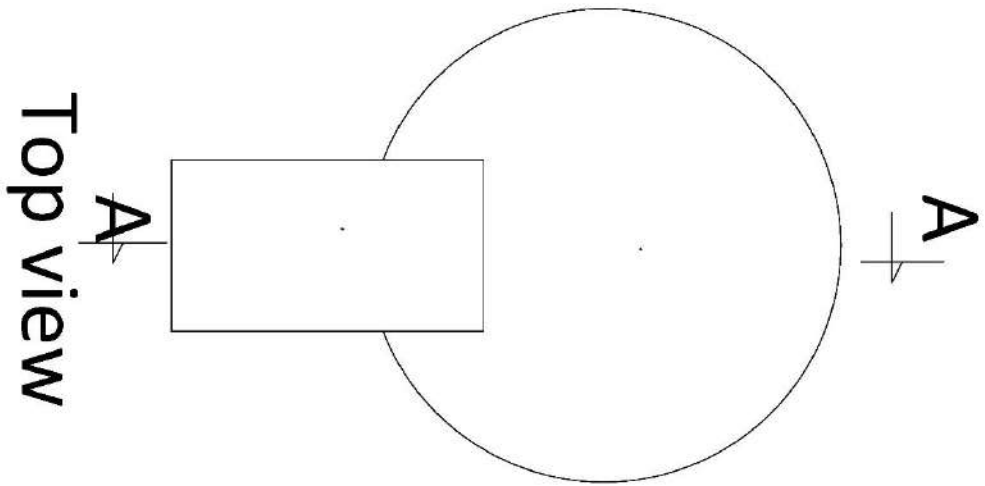


FRONT VIEW

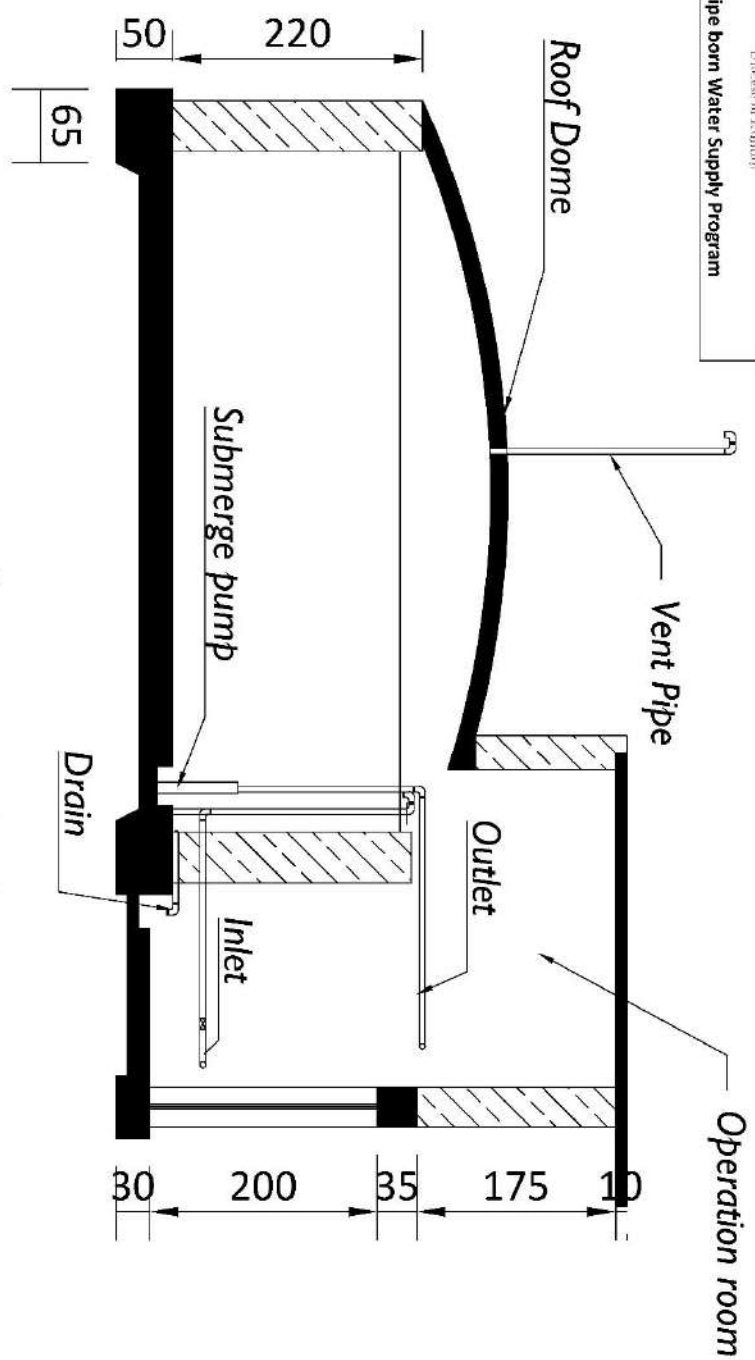
SUCTION TANK



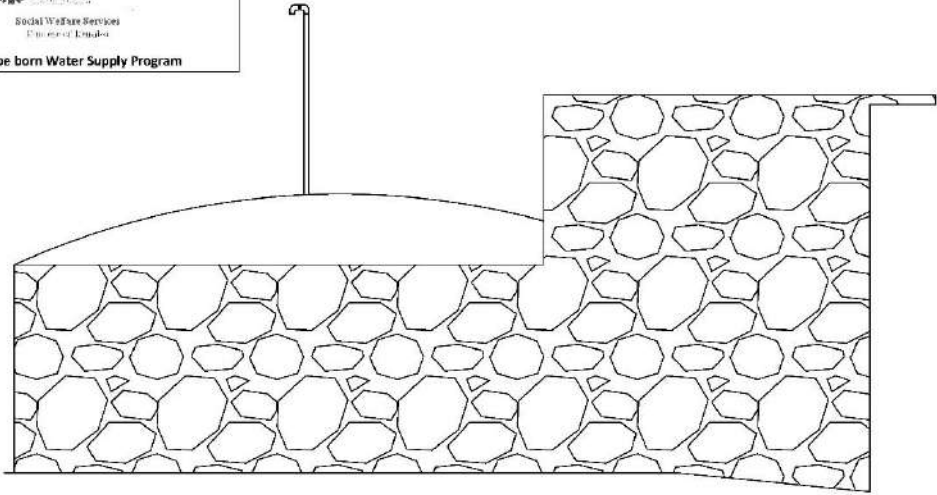
Plan



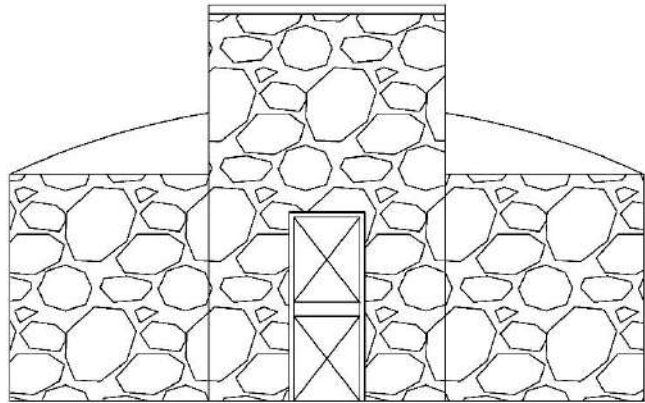
Top view



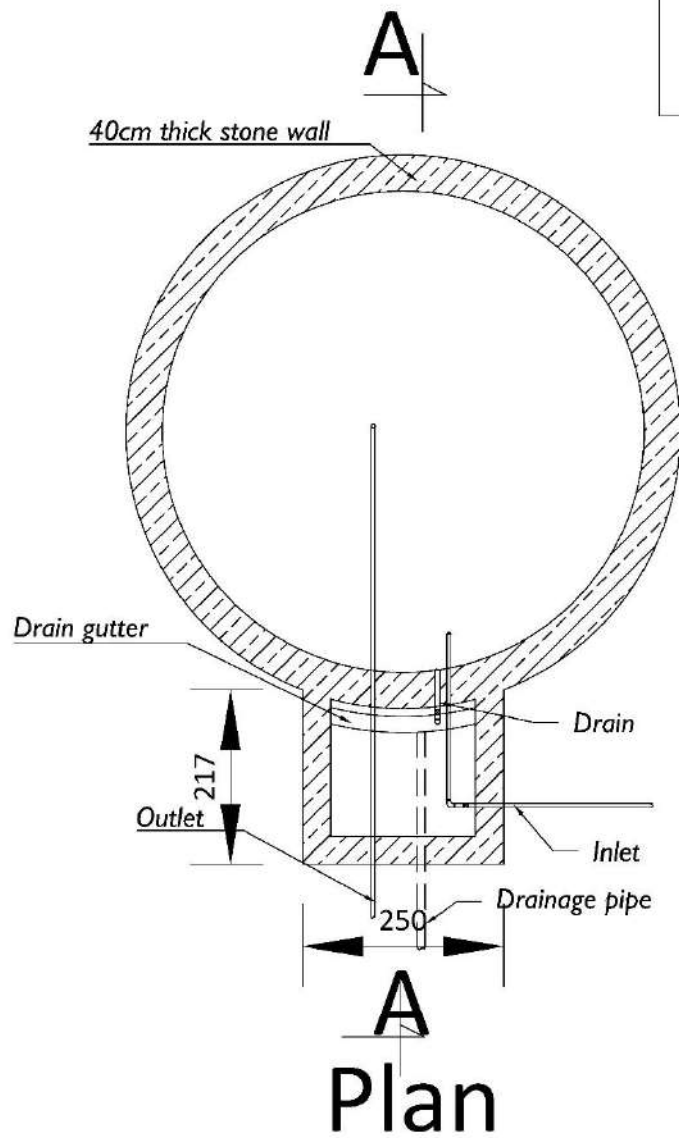
Section AA



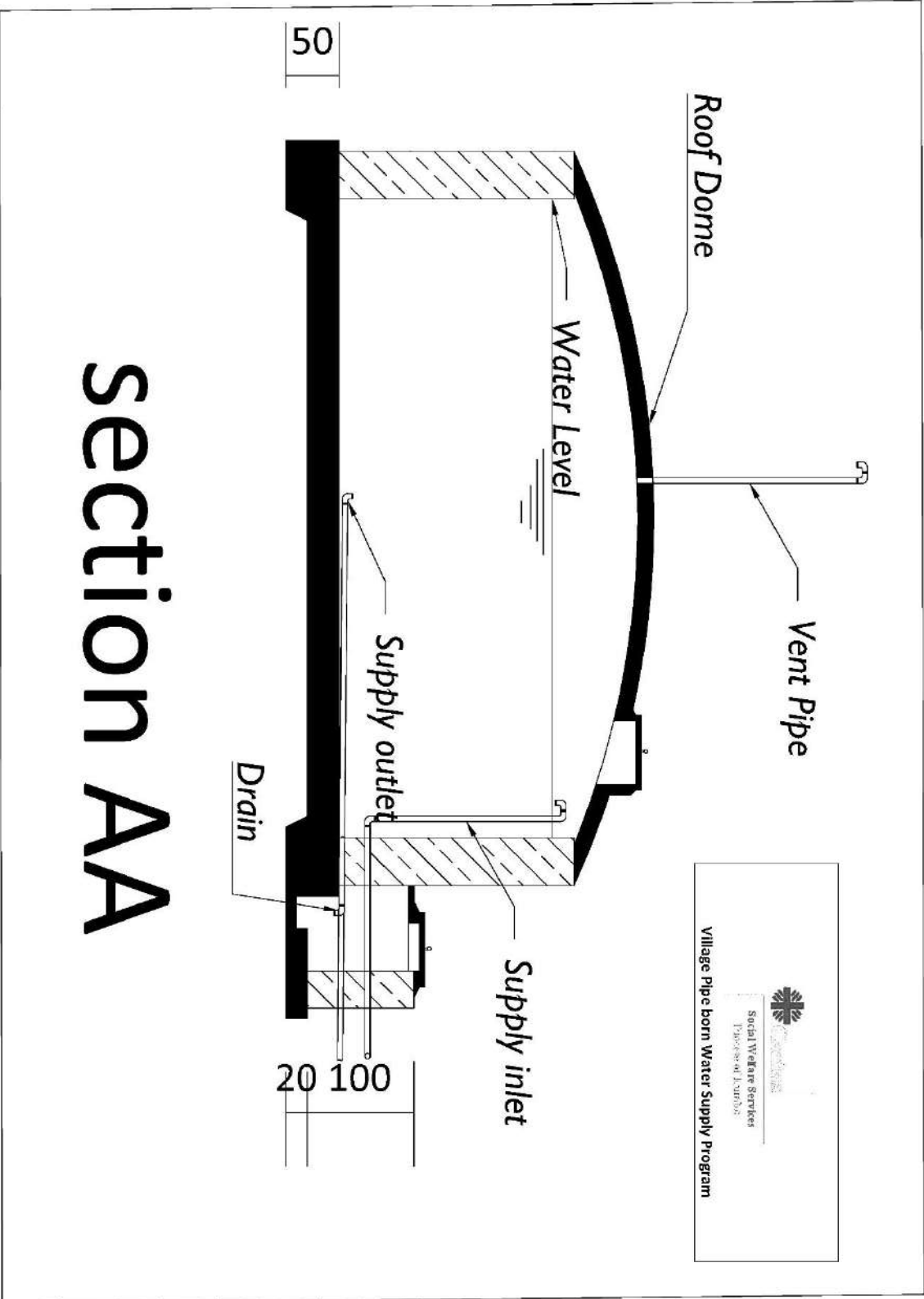
Left View



Front View



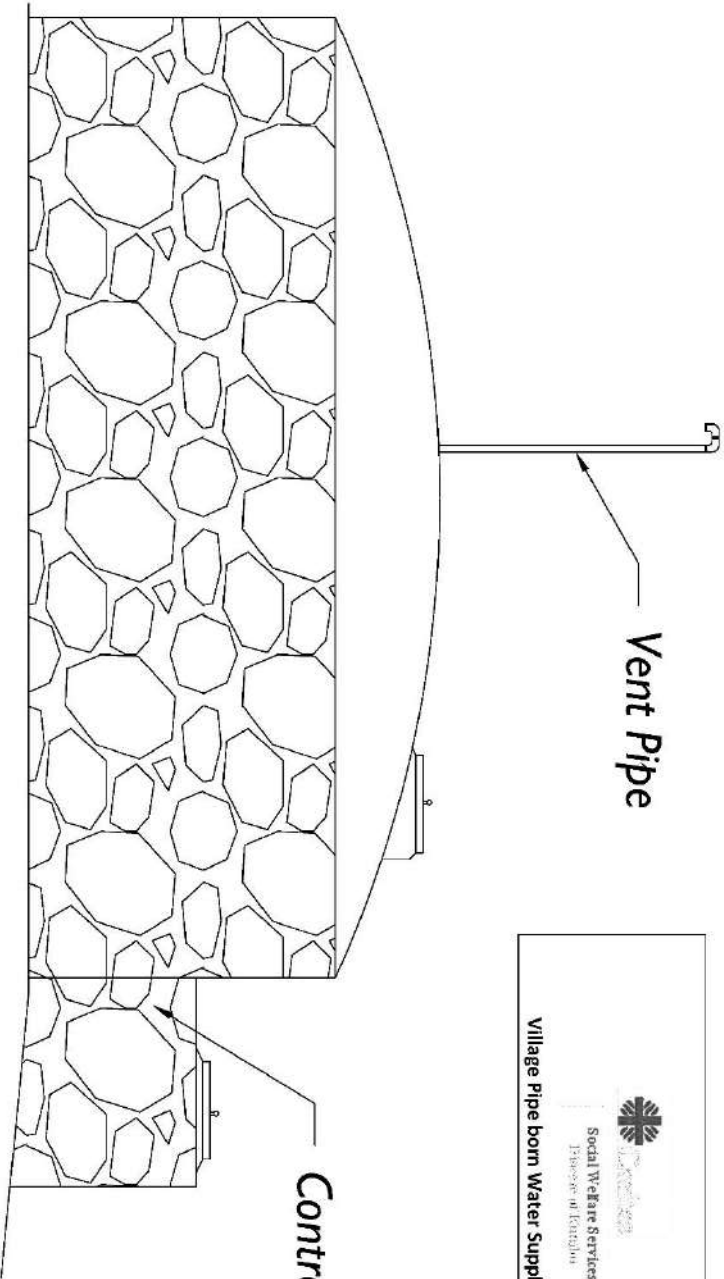
Tank Size	5	10	15	20	25	30	35	40	45
Diameter	2.1	2.9	3.6	4.1	4.3	4.7	5.1	5.5	5.6
Height of Water	1.5	1.5	1.5	1.5	1.7	1.7	1.7	1.7	1.8
Total height	1.7	1.7	1.7	1.7	1.9	1.9	1.9	1.9	2



Section AA



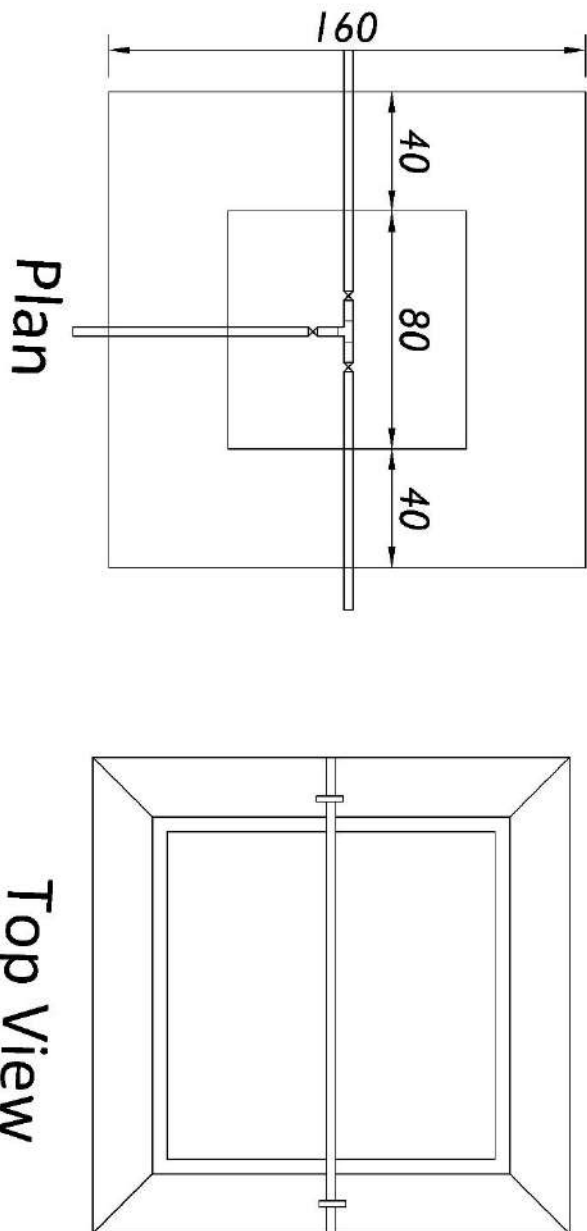
Vent Pipe



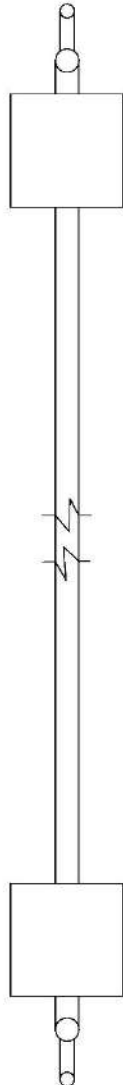
Control Chamber

Left View

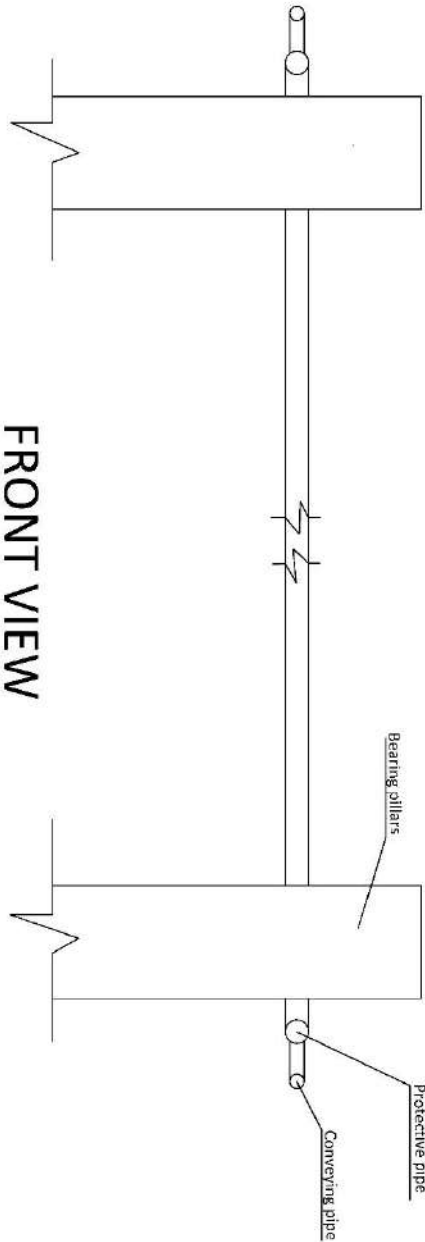
PLAN OF CHAMBER



STREAM CROSSING



PLAN



FRONT VIEW

PLAN OF STAND TAP

